

SIM.M.F–S1

TESTING MACHINE CALIBRATION IN COMPRESSION SIM COMPARISON UP TO 100 kN

Juan Christian Villarroel Poblete¹ - Hernán Oliva C.¹ – Luis Rubén Soto Pinto¹ - Guenther Haucke²

¹Instituto de Investigaciones y Control del Ejército (IDIC), Santiago, Chile

²Physikalisch Technische Bundesanstalt (PTB), Braunschweig, Germany

Abstract – A SIM comparison was performed in the field of testing machines calibration. This comparison is registered in the BIPM key comparison database (KCDB) as supplementary comparison SIM.M.F–S1. It was conducted among 13 participants and IDIC (Chile) was the Pilot laboratory for this exercise.

The final report lists all data of measurement results and declared uncertainties as obtained by the participating NMIs, as well as degrees of equivalence and levels of measurement agreement.

1. INTRODUCTION

The development and recognition of Chile's Laboratorio Custodio de Patrones Nacionales de Fuerza (National Force Standards Custodian Laboratory) together with PTB's technical cooperation activities in other Latin American countries have contributed to generate training activities for technicians in third countries providing them knowledge and experiences in the area of this magnitude.

This way an alliance has already been developed that allows the triangular and punctual cooperation with the national institutes of metrology of several Latin American countries (Bolivia, Colombia, Chile, Costa Rica, Ecuador, Panamá, Paraguay, Peru and Uruguay).

In Phase I of the Triangle project between Germany, Chile and Andean Countries a stocktaking of the metrological possibilities in the Andean countries was carried out first for the measurand force. The intended measures to improve the metrological equipment were discussed. The workshop in Santiago 2008 was particularly held for the beginners in the field of material testing machine (MTM) calibration. All participants (Table. 1) used their own equipment and worked on the same MTM, a make of INSTRON, measuring range 50 kN.

A testing machine calibration comparison was carried out among various laboratories from SIM. In Phase II the participant circle was extended by additional members of SIM, so that many countries of the South American continent and the Caribbean region were involved from Mexico in the North to Uruguay in the South, in order to compare and to evaluate the results of the calibrations of testing machine. The calibration comparison was carried out for the range of 100 kN in compression.

A testing machine of the SIC force laboratory was prepared for the comparison measurements. The force was generated by a piston-cylinder-system and the force indicator consists of a 100 kN-force transducer in combination with a DK 38. The amplifier was adjusted in kN with a resolution of 0.01 kN.

The calibrations was made in conformity with the standard ISO 7500:2004 part 1, the measurement uncertainty was evaluated according to ISO guide "expression of Uncertainty in Measurements" and to the document EA-10/04 "Uncertainty of calibration results in force measurements".

From the measurement results obtained by each laboratory, the following parameters are determined: accuracy (q), repeatability (b), and calibration uncertainty (u). The normalized error (En) is evaluated to determine the quality of measurement results between labs. The results obtained and the deviations graphs that include the uncertainty for each laboratory are presented in this document.

This work will allow to gather information about the all participants Comparison Force Calibration Machine to make future works of investigation to reduce the uncertainty in the calibration of customer's standards of National Force Standards Laboratory from each country and declare yours CMC's capabilities.

The report presents the main results obtained during the development of phase 2 of this triangular project.

2. PARTICIPANTS

While in the first phase only countries of the Andean States as well as Paraguay, Uruguay, Panama were involved, the number of participants was extended for the last workshop by some members of the SIM. The following countries took part:

	Country	Phase I	Phase II
1	Argentina		
2	Bolivia		
3	Brasil		
4	Chile		
5	Colombia		
6	Costa Rica		
7	Ecuador		
8	Jamaica		
9	Mexico		
10	Panama		
11	Paraguay		
12	Peru		
13	Uruguay		

Table 1 Participating Countries

Instituto Nacional de Tecnología, Normalización y Metrología (INTN), Asunción, Paraguay
 Instituto Nacional de Normalización Ecuatoriano (INEN), Quito, Ecuador
 Instituto Boliviano de Metrología (IBMETRO), La Paz, Bolivia
 Instituto Nacional de Defensa de la Competencia y de la Protección de la Propiedad Intelectual, (INDECOPI), Lima, Perú
 Centro Nacional de Metrología de Panamá, (CENAMEP), Panamá, Panamá
 Superintendencia de Industria y Comercio, (SIC), Bogotá, Colombia
 Laboratorio Tecnológico del Uruguay, (LATU), Montevideo, Uruguay
 Instituto Nacional de Tecnología Industrial, (INTI), Buenos Aires, Argentina
 Instituto Nacional de Metrología, Qualidade e Tecnologia, (INMETRO), Río de Janeiro, Brasil
 Centro Nacional de Metrología (CENAM), Querétaro, México
 Laboratorio Nacional de Materiales y Modelos Estructurales Universidad de Costa Rica, (LAMMEC UCR), San José, Costa Rica
 Bureau of Standards, (BSJ), Kingston, Jamaica

3. MEASUREMENT EQUIPMENT

Calibration of the used devices

The force transducers and amplifiers used were quite heterogeneous. The amplifiers varied between HBM models DK38, MGCplus, DMP40, SCOUT 55, CONTROLS and last but not least a proving ring as a passive, analogue instrument. All amplifiers work with carrier frequency which depends on the different types (225 Hz, 600 Hz and

4,8 kHz). Some participants used two force transducers because the working range did not cover the full range of the MTM.

All measuring chains were calibrated in different NMIs or accredited calibration laboratories. The force calibration facilities are of different types with different best measurement capabilities which have an effect on the class of the force measuring instruments.

Table 2 shows the equipment used.

The force transducers (measuring chains) were recalibrated in different force standard machines (FSM) with different measurement uncertainties. The classification of a force transducer is no property of the device but is the result of a measuring.

Participant	Force Transducer
Argentina	100 kN Z4
Bolivia	200 kN Z4A
Brazil	100 kN C4
Chile	100 kN Z4
Colombia	100 kN Z4
Costa Rica	30 kN E0100/AS
Costa Rica	300 kN E0100/BS
Ecuador	300 kN Prov.Ring
Jamaica	100 kN C18
Mexico	100 kN C3H3
Panama	200 kN Z4A
Paraguay	200 kN Z4A
Peru	50 kN U15
Peru	500 kN U15
Uruguay	200 kN U1

Table 2 Measuring devices

4. TABLE OF RESULTS

The evaluation of the measurement results was made in accordance with ISO 7500-1, Appendix D, "Uncertainty of Calibration Results of Force Measuring Systems".

The relative uncertainty is calculated with the formula

$$U = k \sqrt{\sum_{i=1}^n u_i^2} \quad (1)$$

with k = coverage factor 2

$$u_1 = u_{rep} = \frac{100}{\bar{F}} \sqrt{\frac{1}{n-1} \sum_{i=1}^n (F_i - \bar{F})^2} \quad (2)$$

$$u_2 = \frac{a}{2\sqrt{3}} \quad (3)$$

$$u_3 = u_{trans} \quad (4)$$

$$u_4 = u_{drift} = \frac{Date_{comp} - Date_{calibr}}{2 \text{ years}} \times 1 \times 10^{-4} \quad (5)$$

The contribution u_4 is the same for all participants, the figures vary only with the time difference between the date of calibration and the comparison carried out in Bogotá. The base is $1 \cdot 10^{-4}$. In one case the date of calibration is unknown. So it was estimated that the time difference is 2 years (worst case).

The contribution of the force transducer (u_3) was calculated with the maximum figure of the class the device was rated. There are certain reasons to do this, because the conditions for calibration and the conditions in use on site are quite different, as there is a different time management, usually different ambient temperature, partial measuring range, etc.

The contributions for different temperatures and linear approximations are negligible in this particular case.

The following tables show the results of the testing machine calibration. The original data is mostly expressed in mV/V. For the comparison all data is converted to kN using the inverse formula based on the calibration results of the force transducers.

Argentina

kN (MTM)	kN mean	q %	b %	a %	U trans	U drift	U %
20	20,16	-0,80	0,005	0,014	0,03	5,01E-05	0,07
40	40,31	-0,77	0,003	0,007	0,03	5,01E-05	0,06
60	60,44	-0,73	0,004	0,005	0,03	5,01E-05	0,06
80	80,58	-0,72	0,002	0,004	0,03	5,01E-05	0,06
100	100,72	-0,72	0,002	0,003	0,03	5,01E-05	0,06

Table 4 Calibration Results Argentina

Bolivia

kN (MTM)	kN mean	q %	b %	a %	U trans	U drift	U %
20	20,16	-0,80	0,005	0,014	0,03	5,01E-05	0,07
40	40,31	-0,77	0,003	0,007	0,03	5,01E-05	0,06
60	60,44	-0,73	0,004	0,005	0,03	5,01E-05	0,06
80	80,58	-0,72	0,002	0,004	0,03	5,01E-05	0,06
100	100,72	-0,72	0,002	0,003	0,03	5,01E-05	0,06

Table 5 Calibration Results Bolivia

Brazil

kN (MTM)	kN mean	q %	b %	a %	U trans	U drift	U %
20	20,14	-0,68	0,089	0,014	0,03	1,58E-09	0,19
40	40,30	-0,74	0,009	0,007	0,03	1,58E-09	0,06
60	60,43	-0,72	0,002	0,005	0,03	1,58E-09	0,06
80	80,57	-0,71	0,004	0,004	0,03	1,58E-09	0,06
100	100,71	-0,70	0,006	0,003	0,03	1,58E-09	0,06

Table 6 Calibration Results Brazil

Obs: This first step had a worse result because Brazil and Argentina, were testing stabilization with decreasing values, it means, after passing through the measurement reference. As can see, it didn't work but we did not have available time to return and do the point again, This effect didn't produce bigger influence in the results of the calibration machine.

Chile

kN (MTM)	kN mean	q %	b %	a %	U trans	U drift	U %
20	20,15	-0,77	0,010	0,014	0,03	5,88E-10	0,07
40	40,29	-0,73	0,003	0,007	0,03	5,88E-10	0,06
60	60,43	-0,71	0,007	0,005	0,03	5,88E-10	0,06
80	80,56	-0,69	0,004	0,004	0,03	5,88E-10	0,06
100	100,70	-0,69	0,004	0,003	0,03	5,88E-10	0,06

Table 7 Calibration Results Chile

Colombia

kN (MTM)	kN mean	q %	b %	a %	U trans	U drift	U %
20	20,15	-0,76	0,007	0,014	0,03	3,07E-11	0,07
40	40,29	-0,72	0,011	0,007	0,03	3,07E-11	0,07
60	60,43	-0,71	0,008	0,005	0,03	3,07E-11	0,06
80	80,56	-0,69	0,003	0,004	0,03	3,07E-11	0,06
100	100,69	-0,68	0,004	0,003	0,03	3,07E-11	0,06

Table 8 Calibration Results Colombia

Costa Rica

kN (MTM)	kN mean	q %	b %	a %	U trans	U drift	U %
20	20,18	-0,88	0,071	0,014	0,03	1,05E-10	0,16
40	40,26	-0,65	0,080	0,007	0,12	1,05E-10	0,29
60	60,40	-0,67	0,066	0,005	0,12	1,05E-10	0,27
80	80,55	-0,68	0,039	0,004	0,12	1,05E-10	0,25
100	100,69	-0,69	0,018	0,003	0,12	1,05E-10	0,24

Table 9 Calibration Results Costa Rica

Panama

kN (MTM)	kN mean	q %	b %	a %	U trans	U drift	U %
20	20,05	-0,27	0,269	0,014	0,03	1,00E-09	0,54
40	40,24	-0,60	0,038	0,007	0,03	1,00E-09	0,10
60	60,39	-0,64	0,019	0,005	0,03	1,00E-09	0,07
80	80,52	-0,65	0,008	0,004	0,03	1,00E-09	0,06
100	100,65	-0,65	0,004	0,003	0,03	1,00E-09	0,06

Table 13 Calibration Results Panama

Ecuador

kN (MTM)	kN mean	q %	b %	a %	U trans	U drift	U %
20	20,11	-0,56	0,000	0,014	0,23	8,93E-09	0,46
40	40,21	-0,52	0,036	0,007	0,12	8,93E-09	0,25
60	60,37	-0,61	0,000	0,005	0,12	8,93E-09	0,24
80	80,45	-0,56	0,036	0,004	0,12	8,93E-09	0,25
100	100,73	-0,72	0,038	0,003	0,12	8,93E-09	0,25

Table 10 Calibration Results Ecuador

Paraguay

kN (MTM)	kN mean	q %	b %	a %	U trans	U drift	U %
20	20,15	-0,74	0,007	0,014	0,03	1,68E-09	0,07
40	40,29	-0,72	0,007	0,007	0,03	1,68E-09	0,06
60	60,42	-0,70	0,014	0,005	0,03	1,68E-09	0,07
80	80,56	-0,70	0,007	0,004	0,03	1,68E-09	0,06
100	100,69	-0,69	0,004	0,003	0,03	1,68E-09	0,06

Table 14 Calibration Results Paraguay

Jamaica

kN (MTM)	kN mean	q %	b %	a %	U trans	U drift	U %
20	20,16	-0,81	0,015	0,014	0,03	2,39E-09	0,07
40	40,31	-0,77	0,011	0,007	0,03	2,39E-09	0,07
60	60,45	-0,75	0,009	0,005	0,03	2,39E-09	0,06
80	80,59	-0,73	0,004	0,004	0,03	2,39E-09	0,06
100	100,72	-0,71	0,003	0,003	0,03	2,39E-09	0,06

Table 11 Calibration Results Jamaica

Peru

kN (MTM)	kN mean	q %	b %	a %	U trans	U drift	U %
20	20,16	-0,77	0,008	0,014	0,03	3,55E-09	0,07
40	40,31	-0,77	0,018	0,007	0,03	3,55E-09	0,07
60	60,48	-0,79	0,028	0,005	0,03	3,55E-09	0,08
80	80,62	-0,77	0,014	0,004	0,03	3,55E-09	0,07
100	100,79	-0,79	0,020	0,003	0,03	3,55E-09	0,07

Table 15 Calibration Results Peru

Mexico

kN (MTM)	kN mean	q %	b %	a %	U trans	U drift	U %
20	20,15	-0,75	0,018	0,014	0,03	4,61E-10	0,08
40	40,30	-0,74	0,009	0,007	0,03	4,61E-10	0,06
60	60,43	-0,71	0,008	0,005	0,03	4,61E-10	0,06
80	80,56	-0,70	0,009	0,004	0,03	4,61E-10	0,06
100	100,70	-0,69	0,007	0,003	0,03	4,61E-10	0,06

Table 12 Calibration Results Mexico

Uruguay

kN (MTM)	kN mean	q %	b %	a %	U trans	U drift	U %
20	20,15	-0,74	0,029	0,014	0,06	4,63E-09	0,14
40	40,32	-0,79	0,072	0,007	0,03	4,63E-09	0,16
60	60,43	-0,71	0,019	0,005	0,03	4,63E-09	0,07
80	80,56	-0,70	0,044	0,004	0,03	4,63E-09	0,11
100	100,68	-0,67	0,010	0,003	0,03	4,63E-09	0,07

Table 16 Calibration Results Uruguay

5. RESULTS

The laboratories deviations were calculated with respect to the mean of the values obtained by the participating primary laboratories (CENAM, INMETRO, INTI), taken as the reference value.

The uncertainties calculated were based mainly on four contributing elements; the standard used by the laboratory (according to the values reported in the BIPM database), relative reproducibility, relative resolution, and calibration results of the force transducer drift between date of calibration.

The results are presented relative to the corresponding nominal force value applied.

In Fig 1 all results are shown in an x-y-error-diagram. For better clearness the particular curves are shifted around the measured force steps. The extensions at the measured points represent the calculated uncertainties in correspondence with the tables 4 to 16.

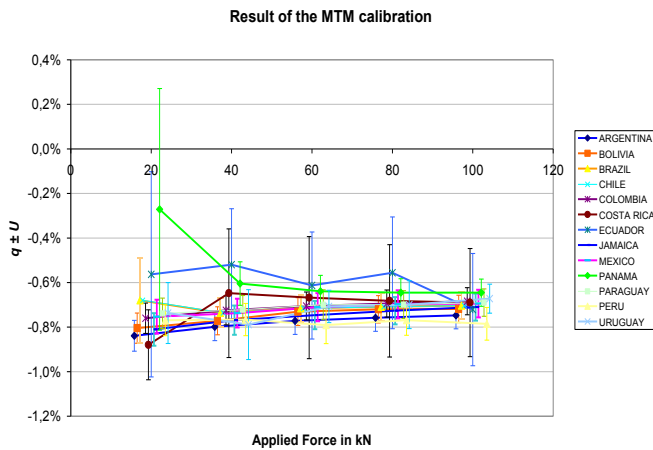


Fig. 1 Calibration Results of all Participants

The most readings were in mV/V. This comes from the calibration of the force transducer which is usually made in mV/V. For the comparison of the machine calibration it is unsuitable and all results are recalculated in kN based on the inverse function which is given in the particular calibration certificates.

The degree of equivalence among the results of the measurements made by the participating laboratories was evaluated using the normalized error equation according to the expression

$$e_n = \frac{E_{ref} - E_{lab}}{\sqrt{(U_{ref})^2 + (U_{lab})^2}} \quad (6)$$

Where,

- e_n - normalized error
- E_{lab} - laboratory's estimated relative deviation
- E_{ref} - reference value: mean calculated from the deviations of the primary laboratories
 $= (e_{CENAM} + e_{INMETRO} + e_{INTI}) / 3$
- U_{lab} - laboratory's expanded uncertainty
- U_{ref} - Combined expanded uncertainty of the primary participating laboratories (according to equation 7).

$$U_{ref} = \frac{\sqrt{U_{CENAM}^2 + U_{INMETRO}^2 + U_{INTI}^2}}{\sqrt{3}} \quad (7)$$

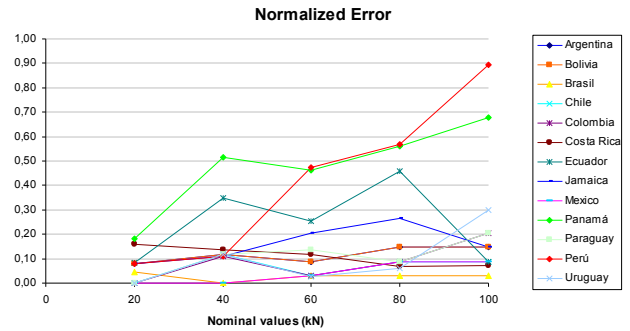


Fig. 2 Normalized Error of Results of all Participants

Vn	Argentina	Bolivia	Brasil	Chile	Colombia
20	0,08	0,08	0,05	0,00	0,00
40	0,12	0,12	0,00	0,12	0,11
60	0,09	0,09	0,03	0,03	0,03
80	0,15	0,15	0,03	0,09	0,09
100	0,15	0,15	0,03	0,09	0,21

Table 17 Normalized Errors Results

Vn	Costa Rica	Ecuador	Jamaica	Mexico	Panamá
20	0,16	0,08	0,08	0,00	0,18
40	0,14	0,35	0,11	0,00	0,51
60	0,12	0,25	0,21	0,03	0,46
80	0,07	0,46	0,27	0,09	0,56
100	0,07	0,09	0,15	0,09	0,68

Table 18 Normalized Errors Results

Vn	Paraguay	Perú	Uruguay
20	0,00	0,08	0,00
40	0,12	0,11	0,12
60	0,14	0,47	0,03
80	0,09	0,57	0,06
100	0,21	0,89	0,30

Table 19 Normalized Errors Results

6. CONCLUSION AND DISCUSSION

The result of this workshop is not directly comparable with the result of the first workshop held in Santiago because of several reasons:

- the MTM-types and the measuring ranges are different,
- the machines have different properties, and
- the equipment used was different

The investigated machine could be classified as a testing machine class 1. Apart from a few single one-offs all results including the measurement uncertainty lie inside the limits of $\pm 1\%$.

A good correspondence was found in the relative deviation of the force indicator of the machine. In conclusion it can be said that all results are reliable and comparable.

This work will allow to gather information about all of the participants of the Comparison Force Calibration Machine to make future works of investigation to reduce the uncertainty in the calibration of customer's standards of National Force Standards Laboratory from each country.

From the results of the analysis of comparability, normalized error equation, it can be concluded that excellent agreement exist among the measurements carried between all participants in the whole range for this comparison.

ACKNOWLEDGEMENTS

The authors wish to acknowledge the German and Chilean governments for their financial support to carry out this exercise, and the Sistema Interamericano de Metrología (Interamerican Metrology System, SIM) with the Physikalisch-Technische Bundesanstalt (PTB, Germany) for the technical assessorship and all the participant countries involved in the development of this work.

Rubén Ricardo Ramírez, René Chanchay, Wilson Angulo, Abelardo Reyerros, Leonardo de la Cruz, Ramiro González, Rufino Batista, Aristides Dajer, Luis H. Barreto, Ernesto Rodríguez, Alejandro Savarín, Edgardo Fulco, Rafael Oliveira, Alejandro Cárdenas, Humberto Tiolli, Jonathan González, Allan Foreman.

REFERENCES

[1] International Vocabulary of Basic and General Terms in Metrology, BIPM, IEC, IFCC, ISO, IUPAC, IUPAP, OIML; 1993.

[2] The International System of Units (SI); Bureau International des Poids et Mesures. BIPM; 1998.

[3] Guide to The Expression of Uncertainty In Measurement; ISO TAG 4 WG 3. BIPM, IEC, IFCC, ISO, IUPAC, IUPAP, OIML; 1995.

[4] ISO 7500 part 1 and 2, Metallic materials – Verification of static uniaxial testing machines.

[5] ISO 376, Calibration of force-proving instruments used for the verification of uniaxial testing machines.

[6] Villarroel J.C., Torres-Guzmán J.C. Giobergia L.R., General Guidelines for the Force National standards comparison within the Interamerican Metrology System (SIM), 1 kN and 50 kN. 2003.

[7] Villarroel J.C., Robles Carbonel J., Haucke G., Force Transducers Calibration Comparison between PTB (Germany), CEM (Spain) and Laboratorio Custodio de Patrones Nacionales - Fuerza (Chile) up to 100 kN.

[8] Torres Guzmán J.C., Ramirez Aedo D., Santo Claudia, Villarroel J.C., Non Primary Standards SIM Force Comparison up to 10 kN.