



Accurate results  
for patient care

Why become a  
JCTLM  
Member  
Organization?

[www.bipm.org/jctlm](http://www.bipm.org/jctlm)

---

## The JCTLM: Global Standardization of Clinical Test Results

---

The Joint Committee for Traceability in Laboratory Medicine (JCTLM) is an international consortium that promotes the global standardization of clinical laboratory test results, and provides information on Reference Materials, Measurement Methods and Services that are available from around the world.

Founded in 2002, the JCTLM has become a key player in helping *in vitro* diagnostic (IVD) manufacturers identify and source appropriate higher order materials, methods and measurement services to fulfil traceability requirements, including those of the European IVD Directive of 1998. This allows manufacturers to establish appropriate calibration hierarchies for their measurement kits, and enables accurate and comparable results for patient care to be achieved.

---

## What are the benefits of JCTLM Membership?

---

By joining the JCTLM, organizations that operate in laboratory medicine or have an interest in traceability in laboratory medicine benefit from:

### Networking

- + Be part of an international platform which offers opportunities to exchange knowledge and experience with other experts at the biennial Members' Meeting.
- + Stay informed with recent updates of the JCTLM database listing higher order certified reference materials, methods and measurement services and relevant events through publications, annual meeting reports and newsletters.

### Communication

- + Make your voice heard by contributing to guidance on internationally recognized and accepted equivalence of measurements in laboratory medicine and traceability to appropriate measurement standards.
- + Gain world-wide exposure and recognition for your organization's involvement in traceability by utilizing the JCTLM logo and communication tools and by participating in the JCTLM working groups' activities.

### Involvement

- + Nominate individuals to working groups to contribute to world-wide activities in identifying higher order materials, methods and reference measurement systems.
- + Express your views on the Executive Committee reports and plans presented to the Members' Meeting and uncover new initiatives in the development and implementation of traceable reference measurement systems.

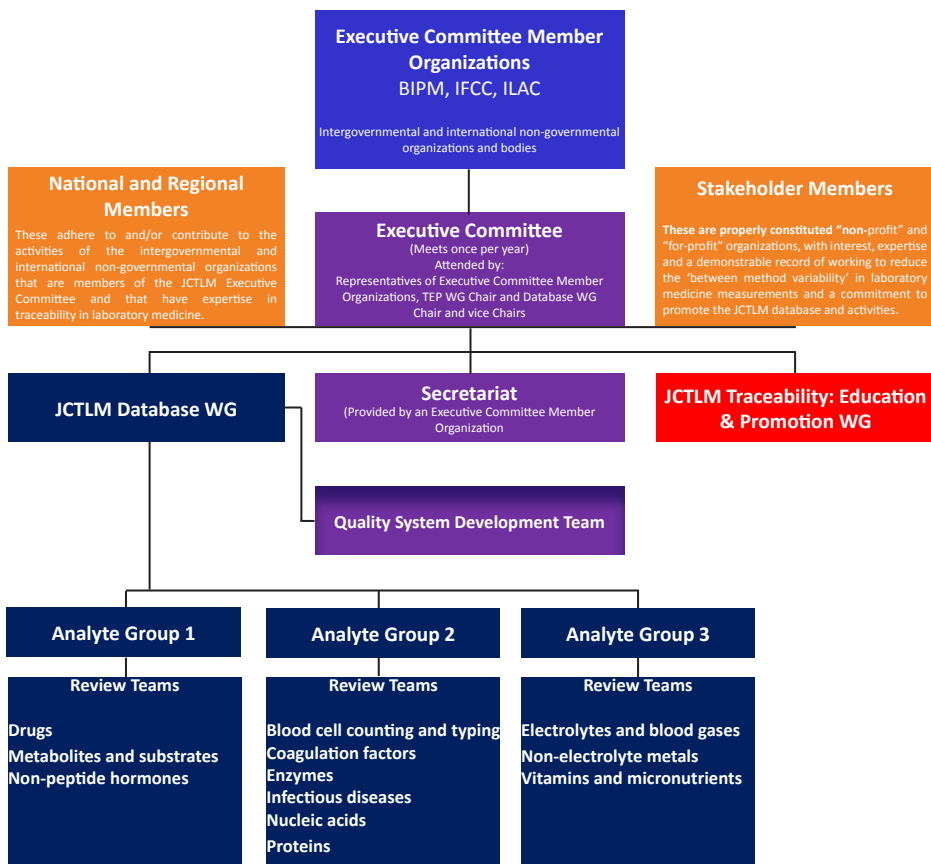
# JCTLM Membership

JCTLM Membership is free of charge and is open to organizations which are authorities in their fields of professional and technical competence.

There are three categories of Membership:

- **National and Regional Members**
- **Stakeholder Members**
- **Executive Committee Members**

## Structure of the JCTLM



## Join the JCTLM

Organizations wishing to apply for membership of the JCTLM should contact the JCTLM Secretariat and provide the following information:

1. Official name of the organization (with acronym)
2. Contact information
3. Nature of the organization
4. Aims and subject areas in which the organization is active
5. Summary of activities being undertaken by the organization to reduce the 'between method variability' in laboratory medicine measurements
6. Description of any previous interaction with or support of the JCTLM
7. Category of membership being sought.

Organizations can also apply by completing the online form available at: <https://form.jotform.com/61653077284965>

JCTLM Secretariat  
Bureau International des Poids et Mesures  
Pavillon de Breteuil  
92312 Sèvres Cedex France  
Tel: +33 1 45 07 70 70  
Fax: +33 1 45 34 20 21  
Email: [jctlm@bipm.org](mailto:jctlm@bipm.org)

