


Outline of JCTLM DB WG process for evaluating and listing higher order materials and methods			
Author : Robert Wielgosz	Date : 01 February 2019 Version: 3.1	Authorized : JCTLM Executive	

Outline of JCTLM Procedures for evaluating Certified Reference Materials and Reference Measurement Methods/Procedures to be listed as being of a higher metrological order

1. Purpose

This outline provides an overview of the process by which the JCTLM Database working group (DB WG) and its review teams make recommendations for listing reference materials and reference measurement methods/procedures as being of a higher metrological order.

2. Contents

1.	PURPOSE	1
2.	CONTENTS	1
3.	SCOPE	1
1.	ACRONYMS AND DEFINITIONS	1
4.	PROCEDURES	1
5.	RELATED DOCUMENTS	2
6.	REVISION HISTORY	2
7.	FLOWCHART	3

3. Scope

The processes outlined in this document apply to all Certified Reference Materials (CRMs) and Reference Measurement Methods/Procedures (RMM/Ps) nominated for inclusion by the JCTLM in its lists of available higher-order materials and procedures.


1. Acronyms and definitions

All acronyms and definitions employed in the procedures of the JCTLM DB WG Quality Manual are given in the procedure document JCTLM EXE-G01, Glossary of terms and definitions.

4. Procedures

The procedure for the evaluation of materials and procedures to be listed by the JCTLM as being of a higher metrological order is segmented into three processes. The details of each process are presented in the individual procedures of the JCTLM DB WG Quality Manual. The attached flowchart indicates how the detailed processes are interconnected.

The procedure by which the JCTLM DB WG communicates and is managed is indicated in this attached flowchart.

Outline of JCTLM DB WG process for evaluating and listing higher order materials and methods			 Accurate results for patient care
Author : Robert Wielgosz	Date : 01 February 2019 Version: 3.1	Authorized : JCTLM Executive	

5. Related documents

JCTLM Preamble	Available at - https://www.bipm.org/utis/common/pdf/JCTLM/Preamble.pdf
JCTLM DBWG-P-00	Quality Policy of the JCTLM Database working group (DB WG)
REVIEW PROCEDURES for Materials and Methods	
JCTLM DBWG-P-01A	Outline of JCTLM DB WG process for evaluating and listing higher order materials and methods (This document)
JCTLM DBWG-P-02A	Process for requesting and accepting nominations for Certified Reference Materials (CRMs) and Reference Measurement Methods/Procedures (RMM/Ps)
JCTLM DBWG-P-03A	Process for the review of nominated Certified Reference Materials (CRMs) and Reference Measurement Methods/Procedures (RMM/Ps)
JCTLM DBWG-P-04A	Process for comparing certified values of the same measurand in multiple reference materials
JCTLM DBWG-P-04B	Process for demonstrating the extent-of-equivalence of Reference Measurement Methods/Procedures for the same nominal measurand
JCTLM DBWG-P-05	Process for consensus review of recommendations from DB WG Review Teams and communicating the recommendations to the JCTLM Secretariat
MANAGEMENT PROCEDURES	
JCTLM DBWG-P-06	Application, nomination and approval for membership on DB WG Review Teams
JCTLM DBWG-P-07	Process for making changes in JCTLM DB WG Quality Manual Procedures
JCTLM DBWG-P-08	Process for creating, restructuring, and retiring DB WG Review Teams
JCTLM DBWG-P-09	Process for appealing decisions of the JCTLM Executive

6. Revision History

Version number	Date of Issue/Review	Summary of change
1.0	01/08/2004	Initial issue of WG1 Quality System Procedures
2.0	10/15/2005	Separation of procedures into reviewing and management groups, revision of titles for some procedures to more accurately reflect the procedure content
2.1	12/01/2006	Correction of Minor Textual errors
3.0	27/01/2017	Document revised after implementation of new organizational structure of JCTLM and its Working Groups
3.1	01/02/2019	Update of hyperlinks

Outline of JCTLM DB WG process for evaluating and listing higher order materials and methods

Author : Robert Wielgosz

Date : 01 February 2019
Version: 3.1

Authorized : JCTLM Executive

JCTLM DB WG
P-01A

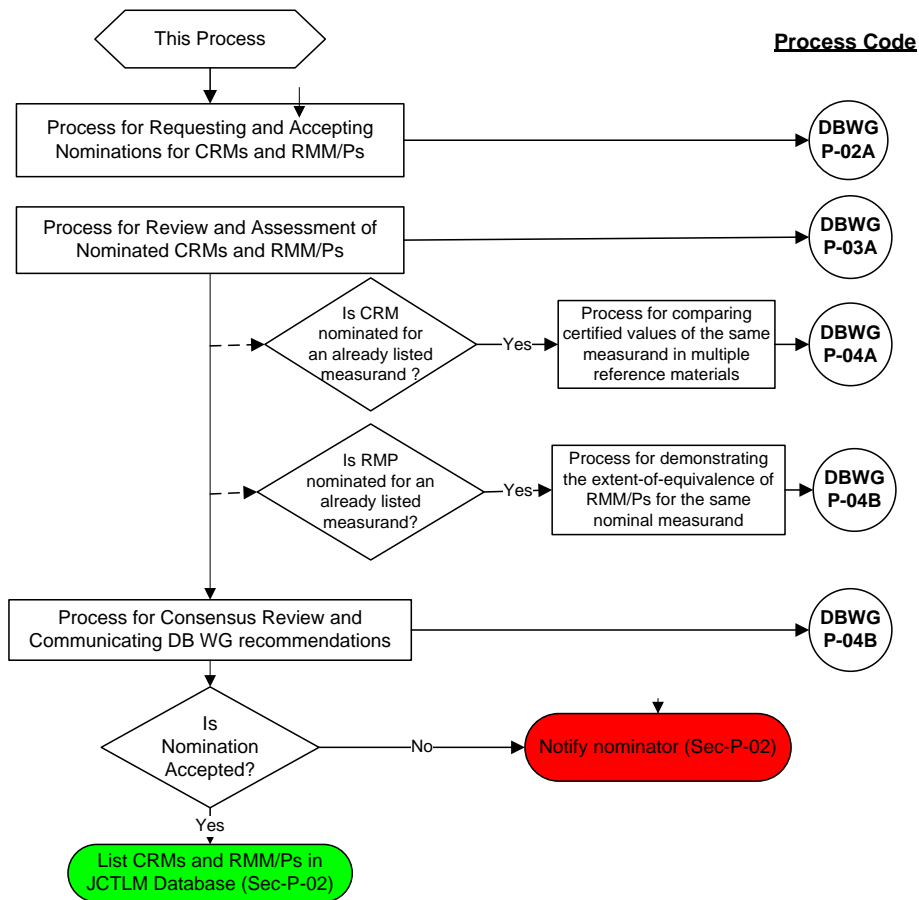


7. Flowchart

January 2017

**Outline of JCTLM DB WG processes for identifying and listing Certified Reference Materials (CRMs) and Reference Measurement Methods/Procedures (RMM/Ps) as being of higher metrological order
DB WG-P-01A**

DB WG Review Process for Materials and Methods



DB WG Management Procedures

