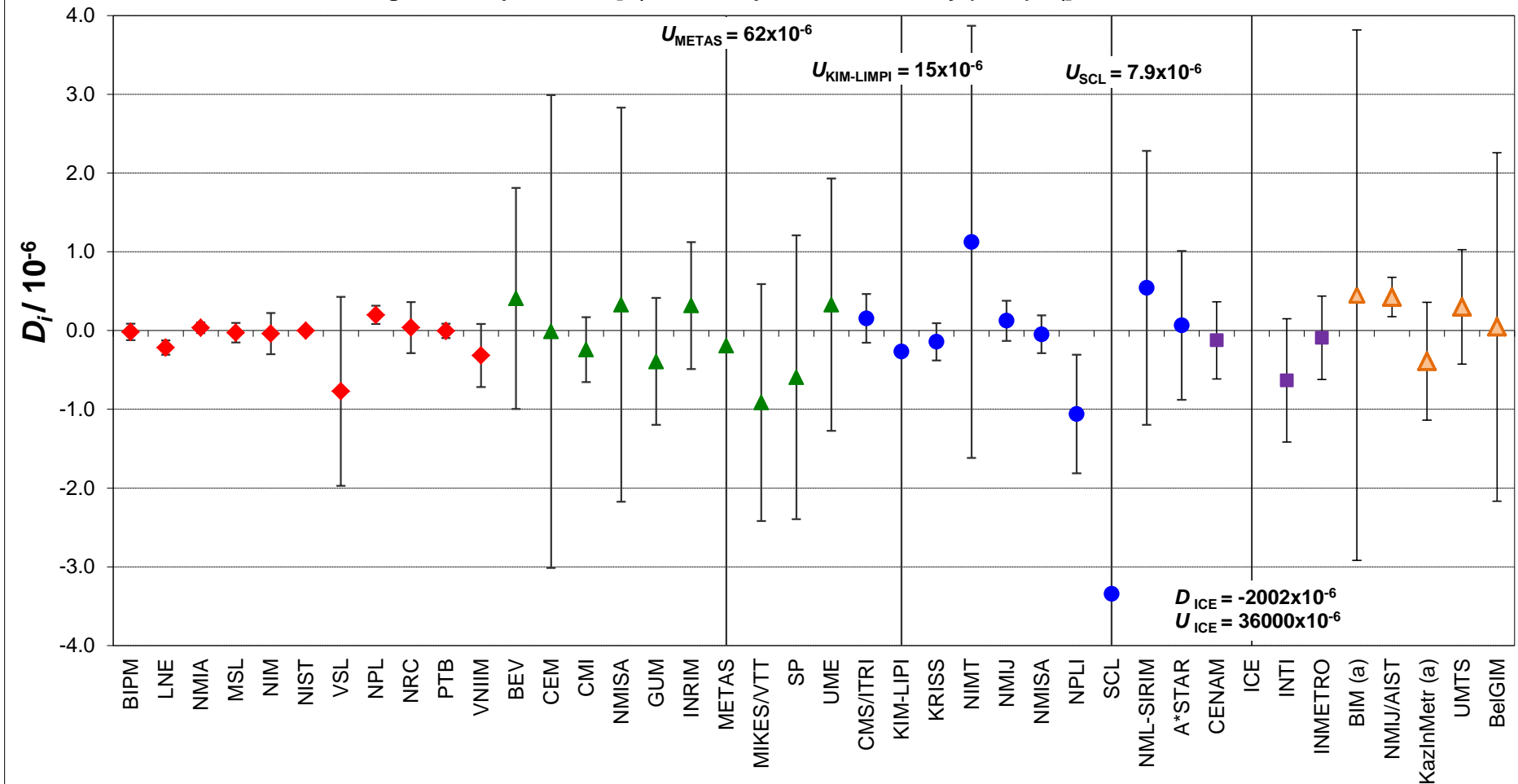


**CCEM-K4, EUROMET.EM-K4, APMP.EM-K4.1, SIM.EM-K4 and COOMET.EM-K4**  
**Capacitance at nominal value 10 pF**  
**Degrees of equivalence [ $D_i$  and its expanded uncertainty ( $k = 2$ ),  $U_i$ ]**



Measurements derived from  $R_{k-90}$  for BIPM, LNE and NPL

Red diamonds : participants in CCEM-K4

Blue circles : participants in APMP.EM-K4.1\*

a) Measurements made at 1000 Hz

Green triangles : participants in EUROMET.EM-K4\*

Purple squares : participants in SIM.EM-K4\*

Orange triangles : participants in COOMET.EM-K4\*

\* linking laboratories to CCEM-K4 are not included