



Traceability, education & promotion

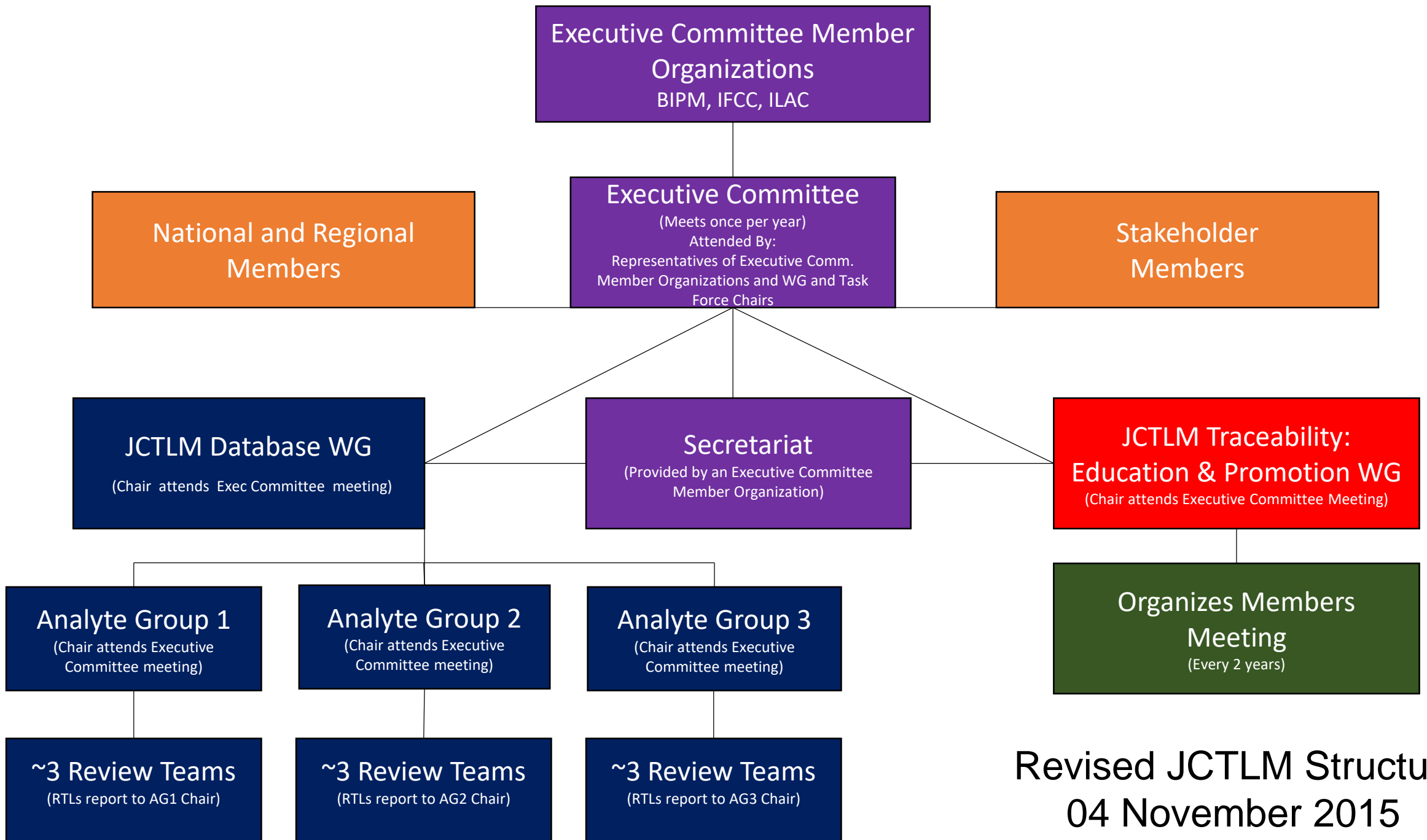
Graham H Beastall

gbeastall@googlemail.com

On behalf of the JCTLM WG for traceability, education & promotion (WG-TEP)

Outline of talk

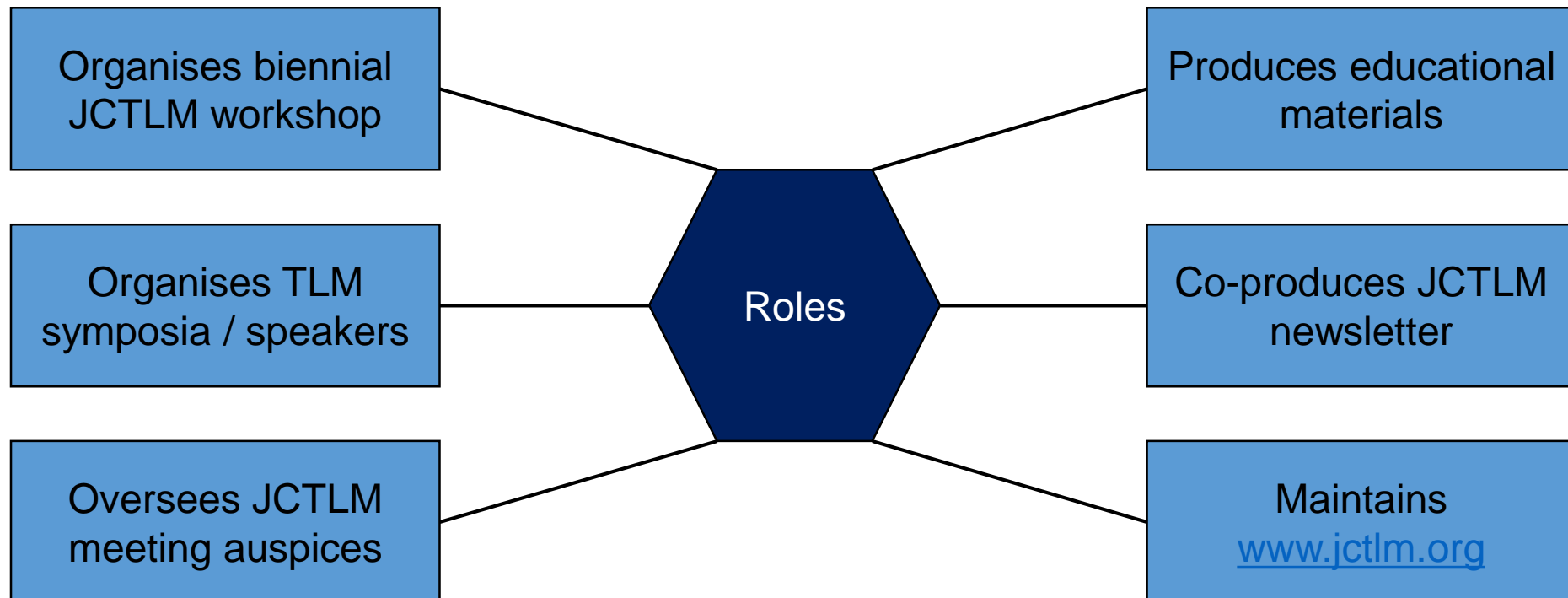
- WG-TEP structure and organisation
- Achievements to date
- What next?



Revised JCTLM Structure
04 November 2015

WG-TEP: What does it do?

Aim: To produce and promote educational materials to demonstrate the value of TLM



WG-TEP Membership

Name	Organisation	Country
Graham Beastall	IFCC	UK
Robert Wielgosz	BIPM	FR
Graham Jones	ILAC	AU
Jeanita Pritchett	NIST	US
David Armbruster	Abbott	US
Tony Badrick	RCPAQAP	AU
Elvar Theodorsson	Eurachem	SE
Vincent Delatour	LNE	FR
David Ducroq	WEQAS	UK
Anja Kessler	RfB	DE
Nanette Brouwer	SKML	NL
Chen Baorong	Beijing Aerospace General Hospital Reference Laboratory	CN
Silvia Quiroga / Marta Torres	ProgBA	AR
Ex Officio		
Gary Myers	JCTLM Chair	US
Stephanie Maniguet	BIPM & WG-TEP Secretary*	FR


Outline of talk

- WG-TEP structure and organisation
- Achievements to date
- What next?

Completed work streams

Work stream	Activity
1	Adopted and introduced new logo, strap line and branding
2	Published definitions of terms used in traceability
3	Published a series of webinars on scientific concepts related to traceability
4	Published importance of traceability to IVD manufacturers
5	Promoted importance of traceability to patients and the public
6	Published global significance of traceability
7	Published tools for promoting traceability
8	Included sessions on traceability in scientific conferences
9	Published and maintained www.jctlm.org

JCTLM members & stakeholders meeting 2019

Accurate Results for Patient Care Workshop 2019 A JCTLM Members' and Stakeholders' meeting 2-3 December 2019, BIPM			
Programme		 Accurate results for patient care	
Day 1: Monday 2 December: Challenges and opportunities	<ul style="list-style-type: none"> Welcome and introduction 	Thomas Liew (CIPM)	09:00
	Session 1: JCTLM Executive report and action plan	Chair: Robert Wielgosz	
	<ul style="list-style-type: none"> JCTLM Executive Committee report 	Ian Young (JCTLM Chair)	09:10
	<ul style="list-style-type: none"> JCTLM database report 	Robert Wielgosz (BIPM)	09:30
	<ul style="list-style-type: none"> JCTLM Education & Promotion Report 	Graham Beastall (IFCC)	09:45
	<ul style="list-style-type: none"> IFCC RELA EQA Scheme Report 	Anya Kessler (RfB, Germany)	10:00
	<ul style="list-style-type: none"> Discussion 		10:15
		Break	10:30
	Session 2: Challenging the status quo	Chair: Graham Beastall	
	<ul style="list-style-type: none"> Topic 1: Harmonising EQA schemes – the next frontier 	Tony Badrick (RCPQAP, Australia)	10:50
	<ul style="list-style-type: none"> Topic 2: Towards a global forum for managing traceability in laboratory medicine 	Christa Cobbaert (Leiden Univ., Netherlands)	11:20
	<ul style="list-style-type: none"> Discussion 		11:50
		Photograph and Lunch	12:30
	Session 3: New concepts to improving quality in laboratory medicine	Chair: Ian Young	
	<ul style="list-style-type: none"> Importance of measurement uncertainty estimate in medical laboratories 	Federica Braga (CIRME, Italy)	13:30
	<ul style="list-style-type: none"> Definition of performance specifications for metrological traceability implementation 	Mauro Panteghini (CIRME, Italy)	13:55
	<ul style="list-style-type: none"> Discussion 		14:20
	Session 4: International standards and regulation	Chair: Ian Young	
	<ul style="list-style-type: none"> ISO 17511 and the work of ISO TC-212 WG2 	Hubert Vesper (CDC)	14:30
	<ul style="list-style-type: none"> The EU In-Vitro Diagnostic Device Regulation (IVDR) 	Gary Myers (IFCC)	14:45
	<ul style="list-style-type: none"> Regulatory hurdles for IVD companies 	Renee Howell (Siemens Healthineers, USA)	15:00
	<ul style="list-style-type: none"> Discussion 		15:15
		Break	15:30

Record participation

Record poster numbers

Parallel session

Evaluation form to be sent

Sessions on traceability at conferences



Consider 'JCTLM auspices' for your meeting

Aim:

- To recognise a conference activity of high scientific and/or educational level in the area of traceability in laboratory medicine.

Benefits:

- Access to JCTLM advice on content and speakers
- Ability to use JCTLM logo in publicity

Commitments:

- Acknowledge JCTLM in publicity material
- Maintain high professional standards
- Allow free access to scientists from all countries

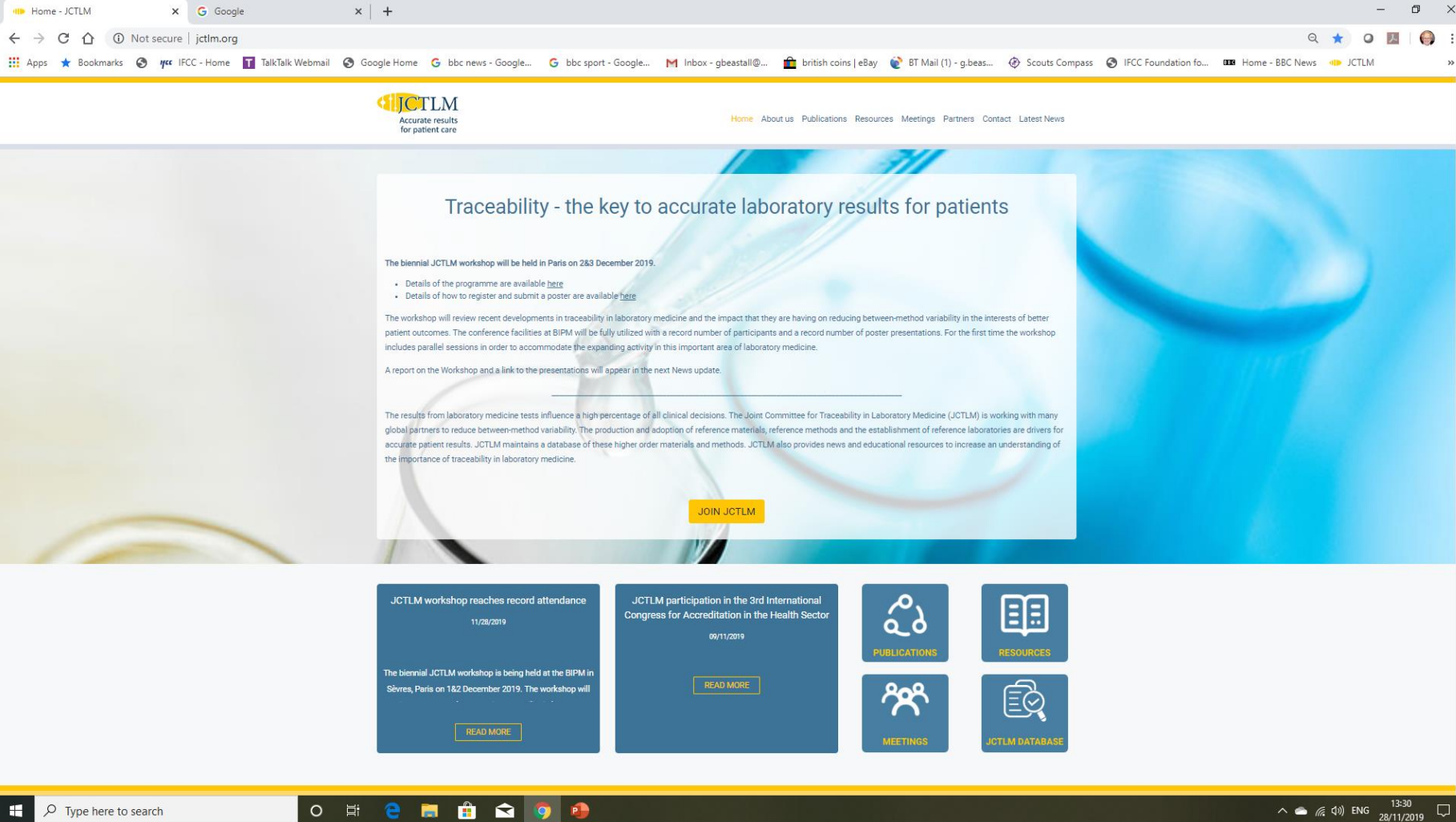
Cost:

- Zero !

Details and application form available from:
Publications section of www.jctlm.org or from jctlm@bipm.org



Website: www.jctlm.org



The screenshot shows a web browser window displaying the JCTLM website. The browser's address bar shows 'jctlm.org' and the page is titled 'Home - JCTLM'. The website's header features the JCTLM logo with the tagline 'Accurate results for patient care' and a navigation menu with links: Home, About us, Publications, Resources, Meetings, Partners, Contact, and Latest News. The main content area has a blue background with a large white box containing the heading 'Traceability - the key to accurate laboratory results for patients'. Below this heading, it announces the biennial JCTLM workshop in Paris on 28-30 December 2019, with links for details and registration. The footer section includes four blue boxes: 'JCTLM workshop reaches record attendance' (11/28/2019), 'JCTLM participation in the 3rd International Congress for Accreditation in the Health Sector' (09/11/2019), 'PUBLICATIONS', and 'RESOURCES'. There are also icons for 'MEETINGS' and 'JCTLM DATABASE'.

Home - JCTLM

Google

Not secure | jctlm.org

Apps Bookmarks IFCC - Home TalkTalk Webmail Google Home bbc news - Google... bbc sport - Google... Inbox - gbeastall@... british coins | eBay BT Mail (1) - g.beas... Scouts Compass IFCC Foundation fo... Home - BBC News JCTLM

JCTLM
Accurate results
for patient care

Home About us Publications Resources Meetings Partners Contact Latest News

Traceability - the key to accurate laboratory results for patients

The biennial JCTLM workshop will be held in Paris on 28-30 December 2019.

- Details of the programme are available [here](#)
- Details of how to register and submit a poster are available [here](#)

The workshop will review recent developments in traceability in laboratory medicine and the impact that they are having on reducing between-method variability in the interests of better patient outcomes. The conference facilities at BIPM will be fully utilized with a record number of participants and a record number of poster presentations. For the first time the workshop includes parallel sessions in order to accommodate the expanding activity in this important area of laboratory medicine.

A report on the Workshop and a link to the presentations will appear in the next News update.

The results from laboratory medicine tests influence a high percentage of all clinical decisions. The Joint Committee for Traceability in Laboratory Medicine (JCTLM) is working with many global partners to reduce between-method variability. The production and adoption of reference materials, reference methods and the establishment of reference laboratories are drivers for accurate patient results. JCTLM maintains a database of these higher order materials and methods. JCTLM also provides news and educational resources to increase an understanding of the importance of traceability in laboratory medicine.

[JOIN JCTLM](#)

JCTLM workshop reaches record attendance
11/28/2019

The biennial JCTLM workshop is being held at the BIPM in Sèvres, Paris on 28-30 December 2019. The workshop will...

[READ MORE](#)

JCTLM participation in the 3rd International Congress for Accreditation in the Health Sector
09/11/2019

[READ MORE](#)

PUBLICATIONS

RESOURCES

MEETINGS

JCTLM DATABASE

Type here to search

13:30
28/11/2019

Website www.jctlm.org

- Extensive and growing list of resources:
 - Publications, both general and analyte specific
 - Webinars – 11 available
 - Scientific presentations from symposia
- All resources are freely available for use
- Regular news updates
- Forms to apply for JCTLM membership and JCTLM auspices
- Direct access to JCTLM database

JCTLM database newsletter

Reference Materials, Measurement Methods and Services for *In Vitro* Diagnostics

JCTLM
Accurate results
for patient care
<http://www.bipm.org/jctlm/>
Issue 6 | April 2019

Database Newsletter

We are pleased to present the sixth issue of the Newsletter which reports on the activities of: JCTLM Working Groups and new Task Force; new entries in the database; the 2019 call for materials, methods and service nominations; and plans for 2019 JCTLM Meetings and events. We also welcome the new JCTLM Chair and new representatives to the JCTLM Executive Committee.

1 Appointment of a new JCTLM Chair

Dr Gary Myers completed his second two-year term as JCTLM Chair in December 2018. During his term, the structure and operation of the JCTLM were revised in order to open member status to new organizations and the Working Group on Traceability: Education and Promotion was established. Under his leadership the number of JCTLM member organizations increased significantly (by 50 % in number) and the awareness of the importance of traceability in laboratory medicine and its impact for accurate results for patient care has continued to grow. The JCTLM Executive Committee expressed its sincere thanks to Dr Myers for his significant contributions over the last four years.

Dr Myers is currently the Chairman of the International Consortium for Harmonization of Clinical Laboratory Results (ICHCLIR), which is an organization member of JCTLM. Therefore, Dr Myers will continue to work closely with JCTLM as he was also appointed as new IFCC representative to the JCTLM Executive Committee.

During its 19th meeting in December 2018, the JCTLM Executive Committee appointed Prof. Ian Young as new Chair of the JCTLM for a renewable two-year term starting in January 2019. Prof. Ian Young is Professor of Medicine at Queen's University Belfast, and Deputy Medical Director and Consultant Chemical Pathologist at Belfast Health and Social Care Trust. In addition, he is Chief Scientific Advisor to the Department of Health, Northern Ireland, and Director of Research for Health and Social Care. He is currently President of the Association for Clinical Biochemistry and Laboratory Medicine (UK), and a member of the IFCC SD Executive Committee. The JCTLM welcomed Prof. Young to the committee.



Handover of JCTLM Chairmanship from Dr Myers (right) to Prof. Young (left) at the BIPM in December 2018.

2 New CIPM representatives to the JCTLM

At its March 2019 meeting the International Committee of Weights and Measures (CIPM) appointed two of its members as new representatives to the JCTLM Executive Committee: Dr Thomas Liew (Singapore) and Dr Sang-Ryoul Park (Republic of Korea) as Deputy.

Dr Thomas Liew is the Executive Director of the National Metrology Center of NMC, A*STAR, Singapore. Dr Sang-Ryoul Park is President of the Korea Research Institute of Standards and Science (KRISS), Republic of Korea.

Dr Park was also appointed President of the Consultative Committee for Amount of Substance: Metrology in Chemistry and Biology (CCQM) for a four-year term at the March 2019 meeting of the CIPM.



Dr Thomas Liew

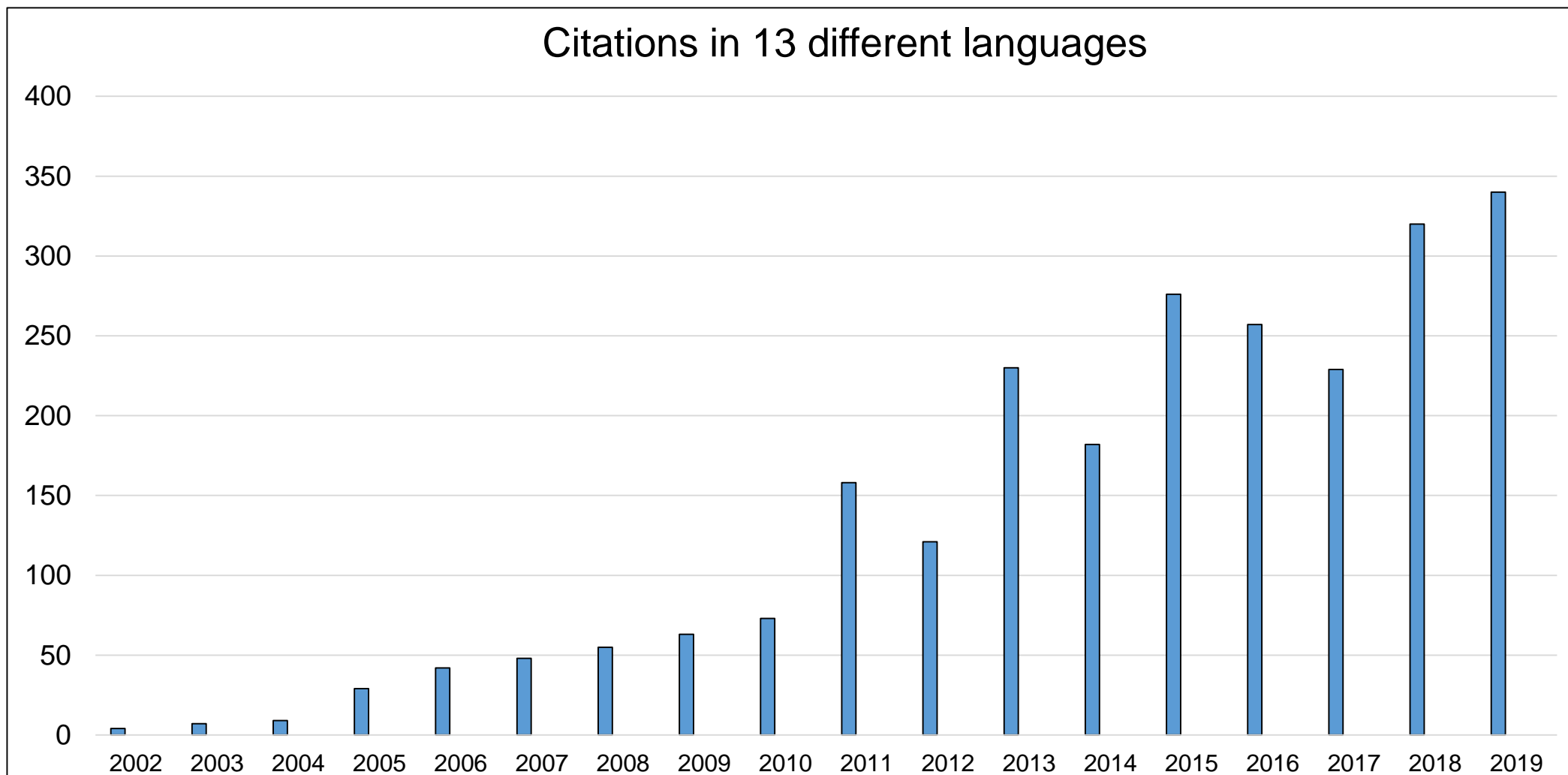


Dr Sang-Ryoul Park

1

- Published annually each March
- To coincide with call for database nominations
- Database entries and update
- Meetings highlights
- Special reports:
 - Metrological traceability for EQA
- Previous issues from www.jctlm.org

‘Traceability + laboratory medicine’: Google Scholar



Outline of talk

- WG-TEP structure and organisation
- Achievements to date
- What next?

1. TLM and laboratory accreditation

International

- 1.1. Collaborate with ILAC to suggest how TLM links to compliance with ISO 15189
- 1.2. Prepare practical examples for use by National Accreditation Bodies and clinical laboratories

National

- 1.3. Explain how COFRAC is interpreting ISO 15189 to recognise the importance of TLM
- 1.4. Through JCTLM Members seek information on similar national initiatives

Local

- 1.5. List audits that accreditation assessors may undertake to assess laboratory TLM status
- 1.6. Suggest local TLM related audits to be undertaken while preparing for accreditation

2. TLM and the harmonisation of clinical laboratory results

International

- 2.1. Prepare 'easy to understand' material to describe why method standardisation and harmonisation are important and how they can be appropriately achieved
- 2.2. Prepare case studies to illustrate methods in need of harmonisation and how this may influence clinical practice
- 2.3. Prepare an indicative flow chart to assist diagnostic companies to retain TLM status during a change in reagent calibrator lots

National

- 2.4. Collate and promote nationally led projects that demonstrate how harmonisation of reference intervals may affect clinical practice. What are the implications for TLM?
- 2.5. Describe how the application of commutable EQA programmes can reduce between method variability. What are the implications for TLM?

Local

- 2.6. Prepare guidance on how to check the TLM- and commutability status of commercially available laboratory methods
- 2.7. Prepare support material, for local use, on 'factors to be considered when choosing your lab methods'

Refresh WG membership

WG-TEP membership should be refreshed

We need input from volunteers with an interest in:

- Taking forward the agreed workstreams
- Promoting the importance of TLM in patient care
- Producing educational materials for different stakeholders
- Organising symposia for global conferences
- Keeping www.jctlm.org up to date
- Introducing TLM to social media

If you are interested contact Graham during the next two days

