



Meetings, Publicity & Promotion

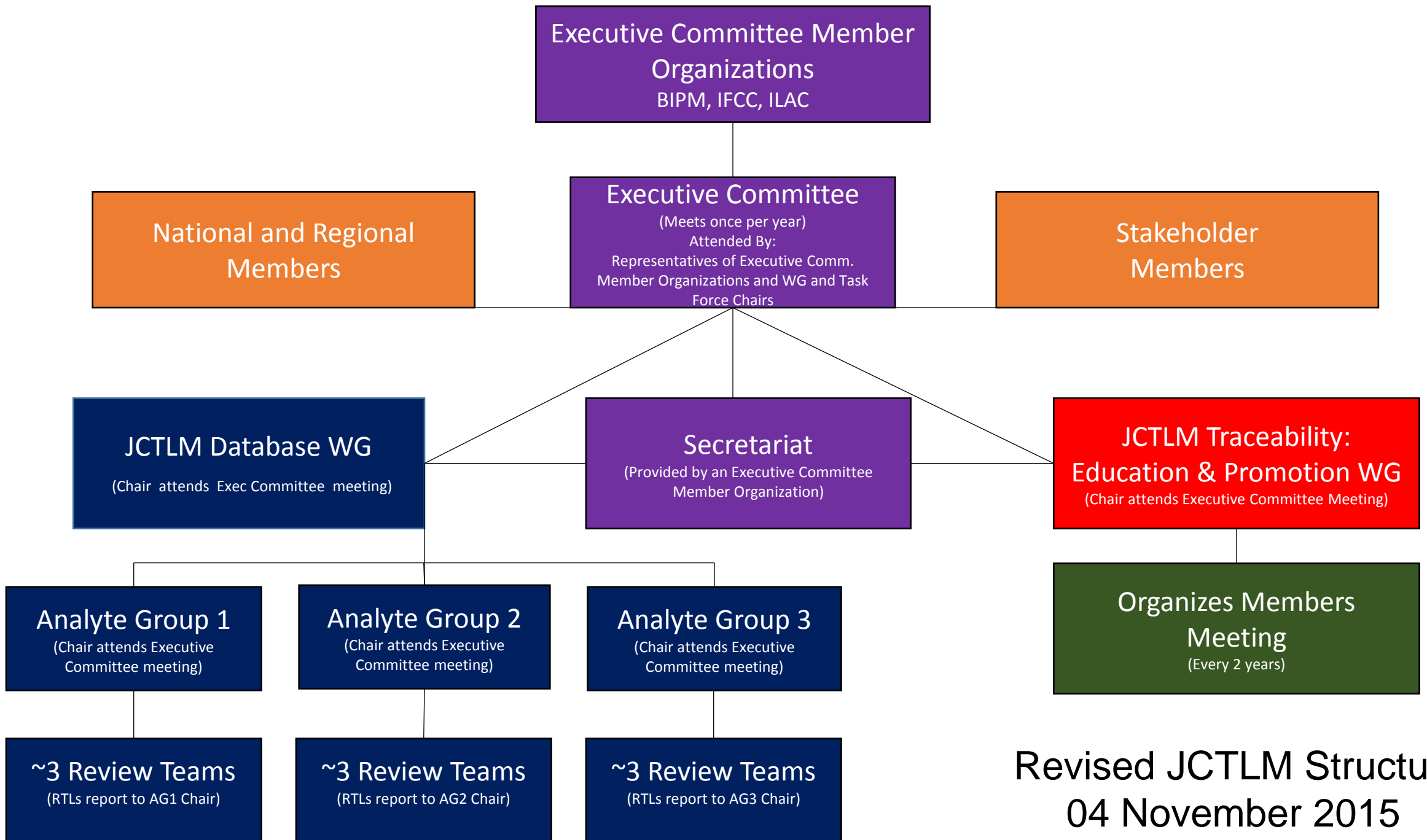
Graham H Beastall

gbeastall@googlemail.com

On behalf of the JCTLM WG for traceability, education & promotion (WG-TEP)

Outline of talk

- WG-TEP structure and organisation
- Meetings
- Publicity & promotion
- What next?



Revised JCTLM Structure
04 November 2015

WG-TEP Terms of Reference

Aim:

- To produce and promote educational materials to demonstrate the value of traceability in laboratory medicine as a means to reduce between method variability in the interests of improved clinical outcomes and patient safety.

Specific Roles:

- Organisation of the two-yearly JCTLM Members & Stakeholders Meeting
- Organisation of JCTLM scientific and educational meetings, symposia and conferences
- Assessment of applications for meetings to be held with JCTLM auspices
- Production of educational materials to promote the value of traceability in laboratory medicine
- In conjunction with the JCTLM Secretariat production of the annual JCTLM e-newsletter
- Production and maintenance of a 'traceability' website

WG-TEP Membership

Name	Organisation	Country
Graham Beastall	IFCC	UK
Robert Wielgosz	BIPM	FR
Graham Jones	ILAC	AU
Jeanita Pritchett	NIST	US
David Armbruster	Abbott	US
Tony Badrick	RCPAQAP	AU
Elvar Theodorsson	Eurachem	SE
Vincent Delatour	LNE	FR
David Ducroq	WEQAS	UK
Anja Kessler	RfB	DE
Nanette Brouwer	SKML	NL
Chen Baorong	Beijing Aerospace General Hospital Reference Laboratory	CN
Silvia Quiroga / Marta Torres	ProgBA	AR
Ex Officio		
Gary Myers	JCTLM Chair	US
Stephanie Maniguet	BIPM & WG-TEP Secretary*	FR

WG-TEP work streams

Work stream	Activity	Lead
1	Publish definitions of terms used in traceability	Robert Wielgosz
2*	Publish a series of presentations on scientific concepts	Elvar Theodorsson
3*	Importance of traceability to IVD manufacturers	Dave Armbruster
4*	Importance of traceability to patients and the public	Graham Jones
5	Global significance of traceability	Graham Beastall
6	Tools for promoting traceability	Graham Beastall
7	Including sessions on traceability in scientific conferences	Graham Beastall / Tony Badrick
8	Publish and maintain a TEP website	Graham Beastall/ IFCC Office

* Subject of separate presentations in this symposium

December 2017: All work streams completed or progressing

Outline of talk

- WG-TEP structure and organisation
- Meetings
- Publicity & promotion
- What next?

JCTLM members & stakeholders meeting 2017

Accurate Results for Patient Care Workshop 2017
International Bureau of Weights and Measures (BIPM), Paris, France
4 and 5 December 2017

 **JCTLM**
Accurate results
for patient care

Aim of the workshop
The workshop will look at a wide range of global initiatives to reduce between-method variability as a means to support improved clinical outcomes and patient safety. Interaction between the speakers and the audience will be a feature.

Target audience
The workshop is open to all individuals and groups with an interest in traceability and method standardization or harmonization. These include laboratory medicine specialists, EQA providers, IVD manufacturers and national metrology institutes. Participants will be able to display posters of their work to share with peers and experts.

Day 1 Workshop on 'Traceability in Action'

- Keynote lecture on the importance of traceability to patients
- Symposium on the importance of traceability in external quality assessment (EQA) programmes
- Symposium on traceability and the IVD industry: the manufacturer's role

Day 2 Workshop on 'Traceability into the Future'

- Symposium on clinical challenge of biomarkers in neurodegenerative disease
- Symposium on future developments in infectious diseases and traceability in laboratory medicine and wide-ranging reports of new initiatives from around the world

A JCTLM Members' and Stakeholders' meeting
www.ictlm.org - The Joint Committee for Traceability in Laboratory Medicine (JCTLM) is working with many global partners to reduce between-method variability. The production and adoption of reference materials, reference methods and the establishment of reference laboratories are drivers for accurate patient results.



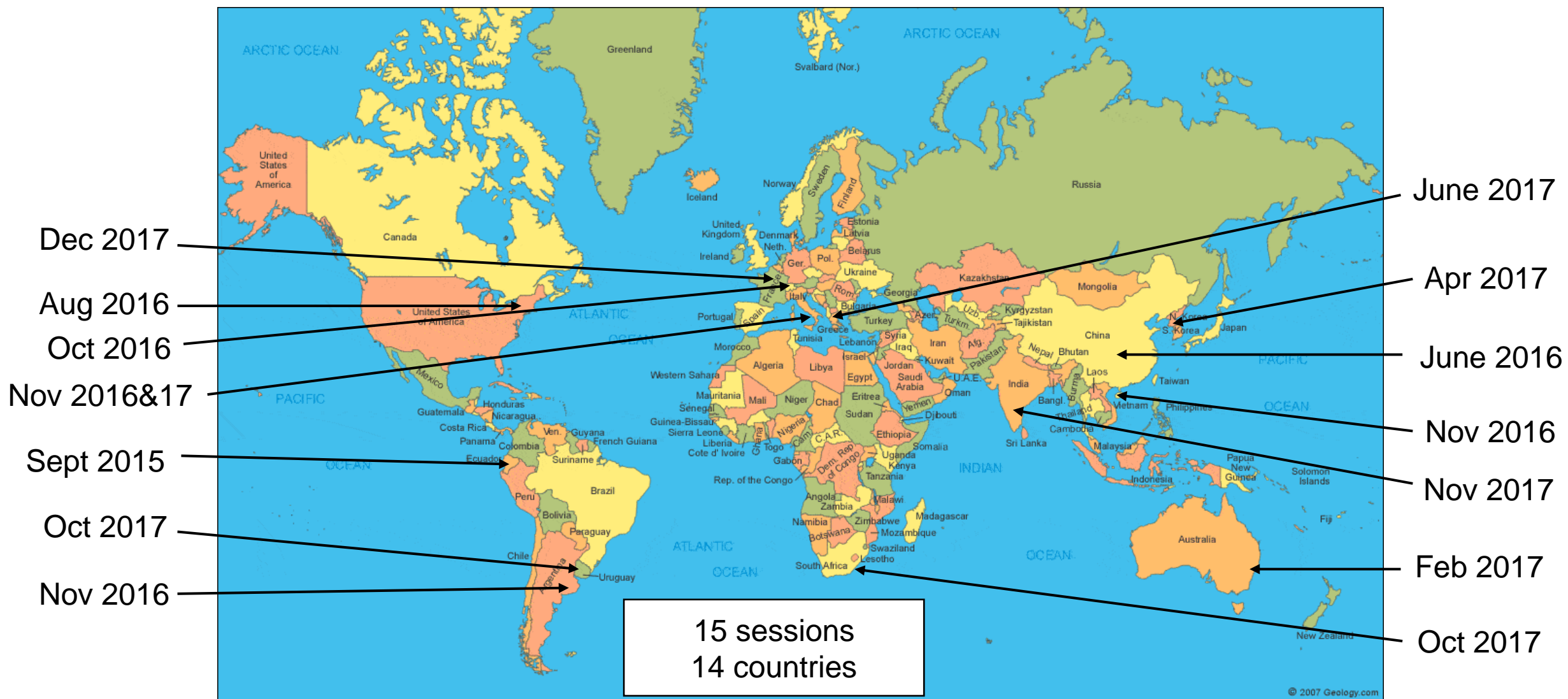
The workshop website can be found at: www.bipm.org/en/committees/jc/ictlm/workshop-2017.html

Large participation

Posters for the first time

Evaluation form to be sent

Sessions on traceability at conferences



Consider 'JCTLM auspices' for your meeting

Aim:

- To recognize a conference activity of high scientific and/or educational level in the area of traceability in laboratory medicine.

Benefits:

- Access to JCTLM advice on content and speakers
- Ability to use JCTLM log in publicity

Commitments:

- Acknowledge JCTLM in publicity material
- Maintain high professional standards
- Allow free access to scientists from all countries

Cost:

- Zero !

Details and application form available from:
Publications section of www.jctlm.org or from jctlm@bipm.org



Outline of talk

- WG-TEP structure and organisation
- Meetings
- **Publicity & promotion**
- What next?

Website: www.jctlm.org

Home - JCTLM

Secure | <https://www.jctlm.org>

Apps HP Connected Inbox - gbeastall@gc TalkTalk Webmail BT Mail BBC News BBC Sport JCTLM IFCC FEN Scouts Compass

Search

JCTLM
Accurate results
for patient care

Home About us Publications Resources Meetings Partners Contact Latest News

Traceability: the key to accurate laboratory results for patients

LATEST NEWS

News - 13 November 2017
11/13/2017
JCTLM membership reaching across the globe
[Read more](#)

News - 26 September 2017
09/29/2017
JCTLM workshop December 2017: invitation to attend
[Read more](#)

News - 11 September 2017
09/11/2017
New series of JCTLM webinars – freely available
[Read more](#)

Windows taskbar: Type here to search, 16:31, 13/11/2017

Website www.jctlm.org

- Extensive and growing list of resources:
 - Publications, both general and analyte specific
 - Webinars – 9 available, 2 in preparation
 - Scientific presentations from symposia
 - Scientific meetings
- All resources are freely available for use
- Regular news updates
- Forms to apply for JCTLM membership and JCTLM auspices
- Direct access to JCTLM database

JCTLM database newsletter

Reference Materials, Measurement Methods and Services for *In Vitro* Diagnostics

 **JCTLM**
Accurate results
for patient care

Database Newsletter
<http://www.bipm.org/jctlm/> Issue 3 | February 2016

We are pleased to present the third issue of the Newsletter which reports on new entries published in the database; the announcement of the 2016 call for materials, methods and services nominations as well as the call for expert reviewers; the 2015 JCTLM Members and Stakeholders Meeting; highlights from the 2015 Executive meetings; TEP WG activity and plans for 2016 JCTLM Meetings.

1 Highlights from the 2015 JCTLM Executive Meetings

The 14th and 15th meetings of the Executive Committee of the Joint Committee for Traceability in Laboratory Medicine (JCTLM) took place at the BIPM on 25-26 June 2015 and 3-4 December 2015. The Committee convened under the Chairmanship of Dr Gary Myers. Full text of the 2015 JCTLM Executive Meeting reports can be downloaded from [JCTLM web pages](#).

1. Revision of the JCTLM Declaration of Cooperation
The Committee approved the revised text of the Declaration of Cooperation (DoC) between the BIPM, IFCC and ILAC, and its Appendices. The amendments to the text relate to the JCTLM Structure and Operation. It opens the JCTLM Executive Committee Member Status to international and non-governmental organizations having technical competence in the field or sub-specialty, and organizes the JCTLM Membership in two categories of members:

- National and regional Members being defined as organizations that adhere to and/or contribute to the activities of the intergovernmental and international non-governmental organizations that are members of the JCTLM Executive Committee and that have expertise in traceability in laboratory medicine and demonstrate a willingness to provide experts for JCTLM Working Groups and Review Teams
- JCTLM Stakeholders Members being defined as properly constituted "non-profit" and "for-profit" organizations, with interest, expertise and a demonstrable record of working to reduce the between method variability in laboratory medicine measurements and a commitment to promote the JCTLM database and activities.

This will come into force on signature of the revised DoC in the first quarter of 2016

2. New structure for JCTLM Working Groups
The Executive approved the recommendation of the *ad hoc*

Working Group on JCTLM Governance to reorganize JCTLM WG1 (materials and methods) and WG2 (services) in one Database WG with a Chair and three vice Chairs. The Committee decided to extend the role of JCTLM Chairman to the role of Database WG Chair, and that each vice-Chair be responsible for an Analyte Group comprising three or more review teams.

This new WG structure and review policy was trialled during the 2015 review cycle for materials, methods and services. Dr Myers convened a meeting on 2 December 2015 where the vice-Chairs of the Database WG and the leaders of the review teams reported on their recommendations proposed for each of the nominations reviewed. This meeting was successful in regard to the feedback and discussion and, thus, recommendations were formally approved at the 15th Executive meeting.

3. Appointment of Database WG vice Chairs
The Executive Committee appointed three Database WG vice Chairs each being responsible for an Analyte Group, and assigned Review Teams to each Analyte Group as follows:

- Prof. Dr Siekmann is responsible for Analyte Group 1 composed of the Drugs, Metabolites and Substrates, and Non-Peptide Hormones Review Teams
- Dr Schimmel is responsible for Analyte Group 2 composed of the Coagulation Factors, Enzymes, Proteins, Nucleic Acid, infectious diseases, Blood Grouping and Cell typing, and Blood cell counting Review teams
- Dr Phinney is responsible for Analyte Group 3 composed of the Vitamins, Non-Electrolyte Metals and Electrolytes and Blood gases Review teams.

4. Adoption of a tag line for the JCTLM logo
The Committee agreed on the tag line 'Accurate results for patient care' which is attached to the JCTLM Logo, and would be included in layouts for promotional materials developed by the JCTLM. The new logo can be seen at the top of this page.

2 JCTLM 2016 call for nominations now open

The JCTLM invites certified reference material producers, authors of reference method publications, and laboratories that provide reference measurement services for laboratory medicine and clinical chemistry to submit nominations for review against JCTLM criteria and possible publication in the database.

Nominations should be made using the procedures and forms available at:

- [Call for Material and Method nominations](#)
- [Call for Laboratory Measurement Service nominations](#)

The closing date for submission of nominations is 30 May 2016

1

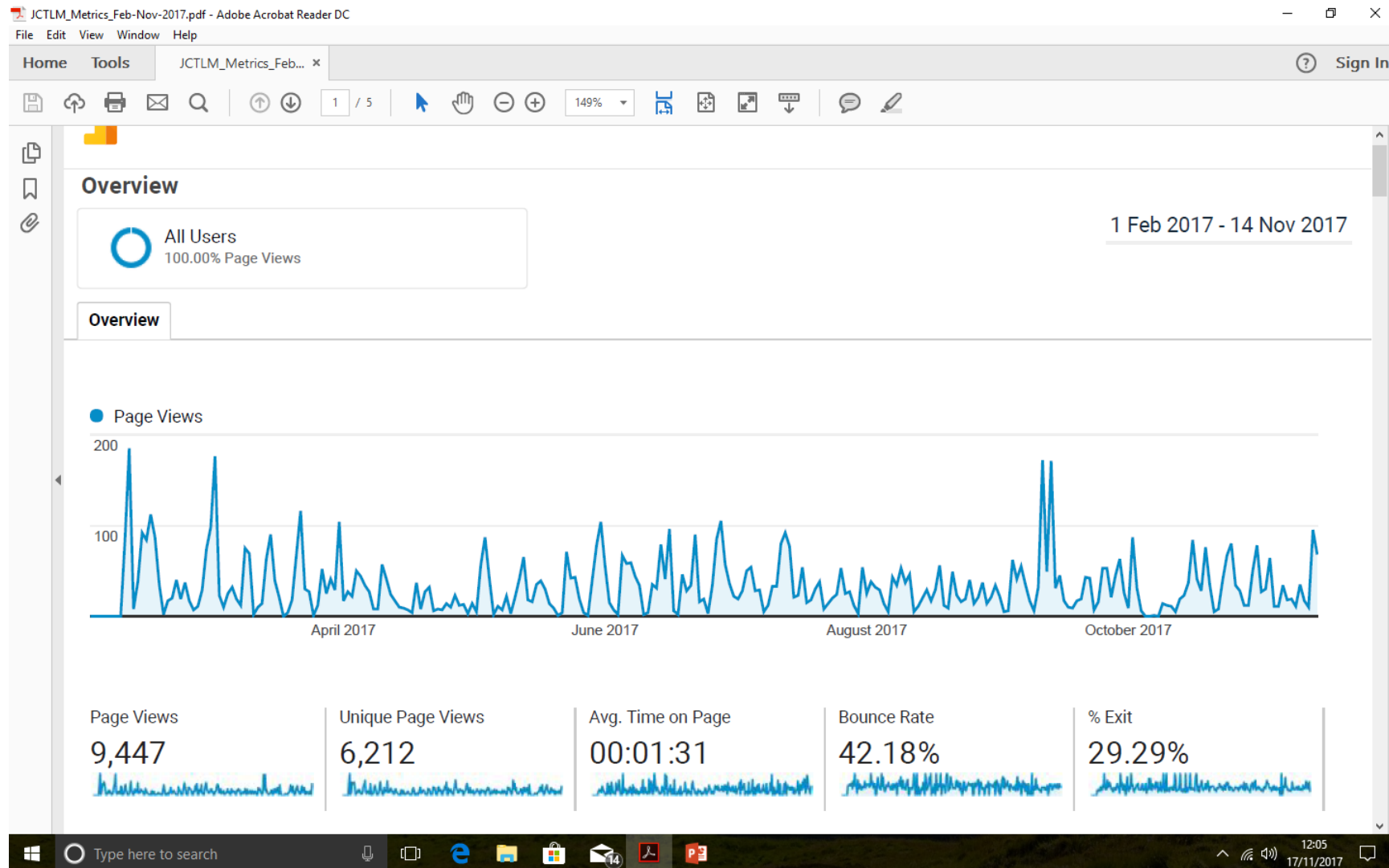
- Published annually each March
- To coincide with call for database nominations
- Database entries and update
- Meetings highlights
- 2017 – gap analysis
- Previous issues from www.jctlm.org

Evidence that the publicity is working

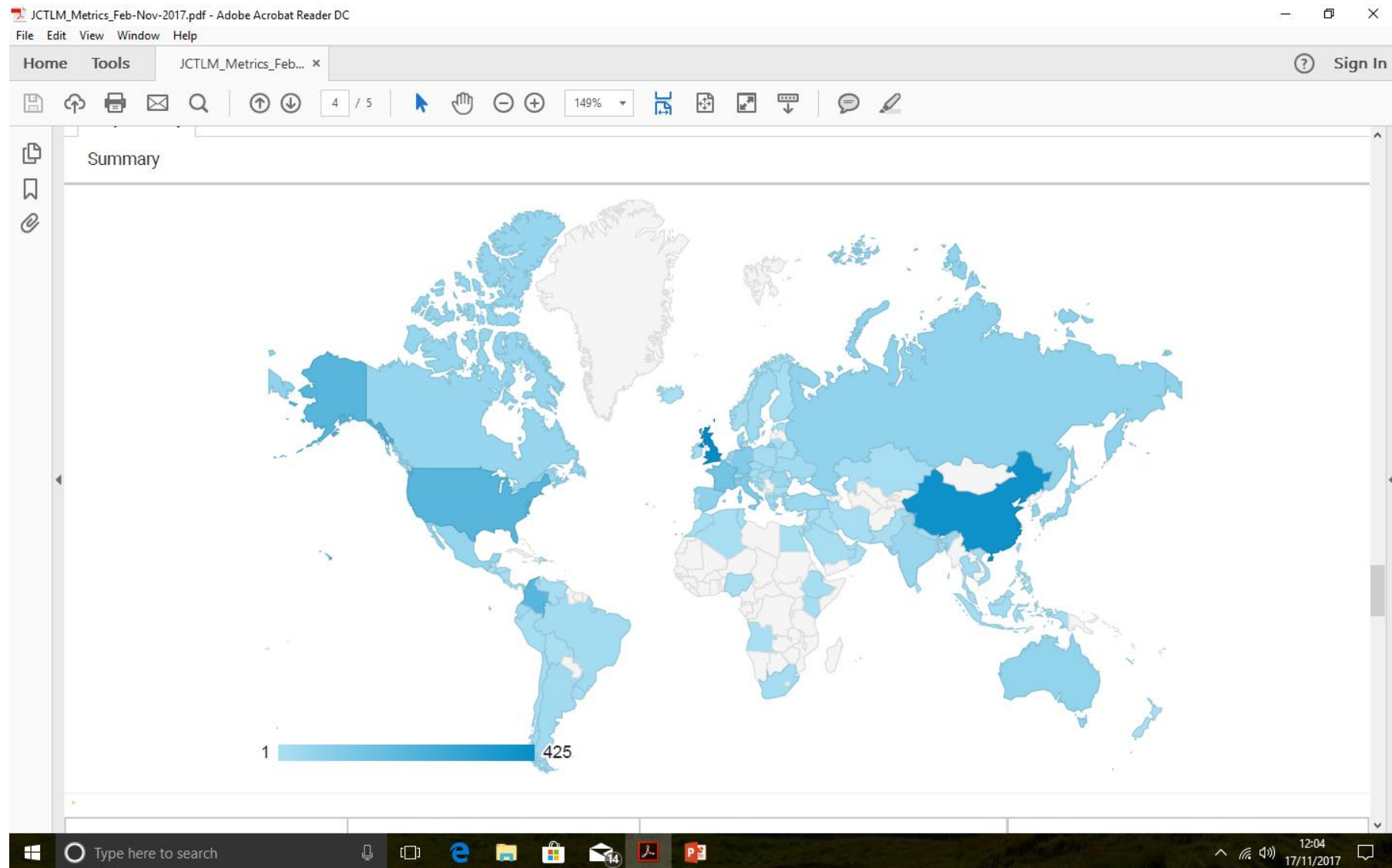
- Rapid growth of JCTLM Members
- Traceability symposia around the world
- Large attendance at 2017 workshop
- Website metrics
- Google analytics



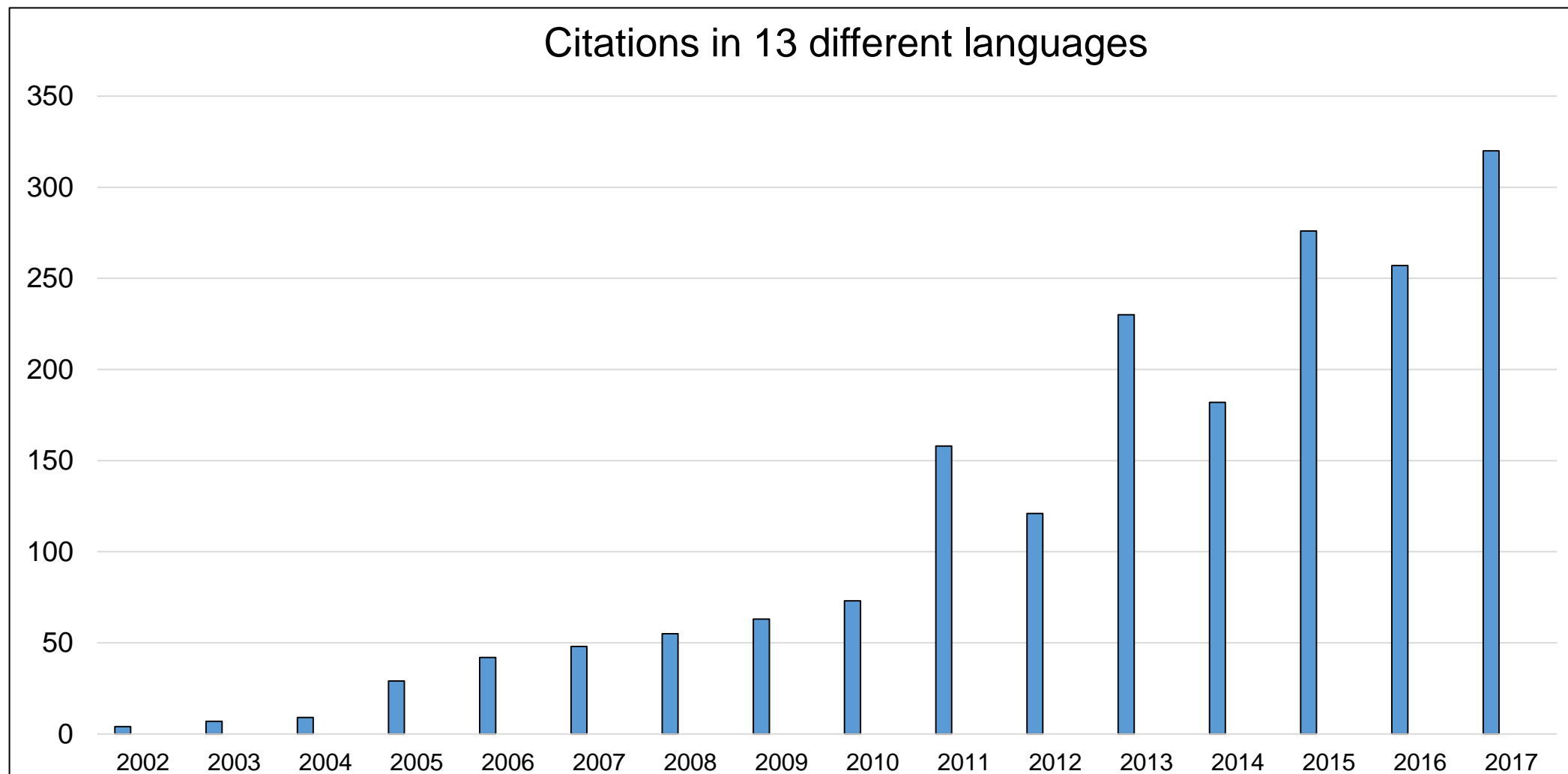
Website metrics www.jctlm.org



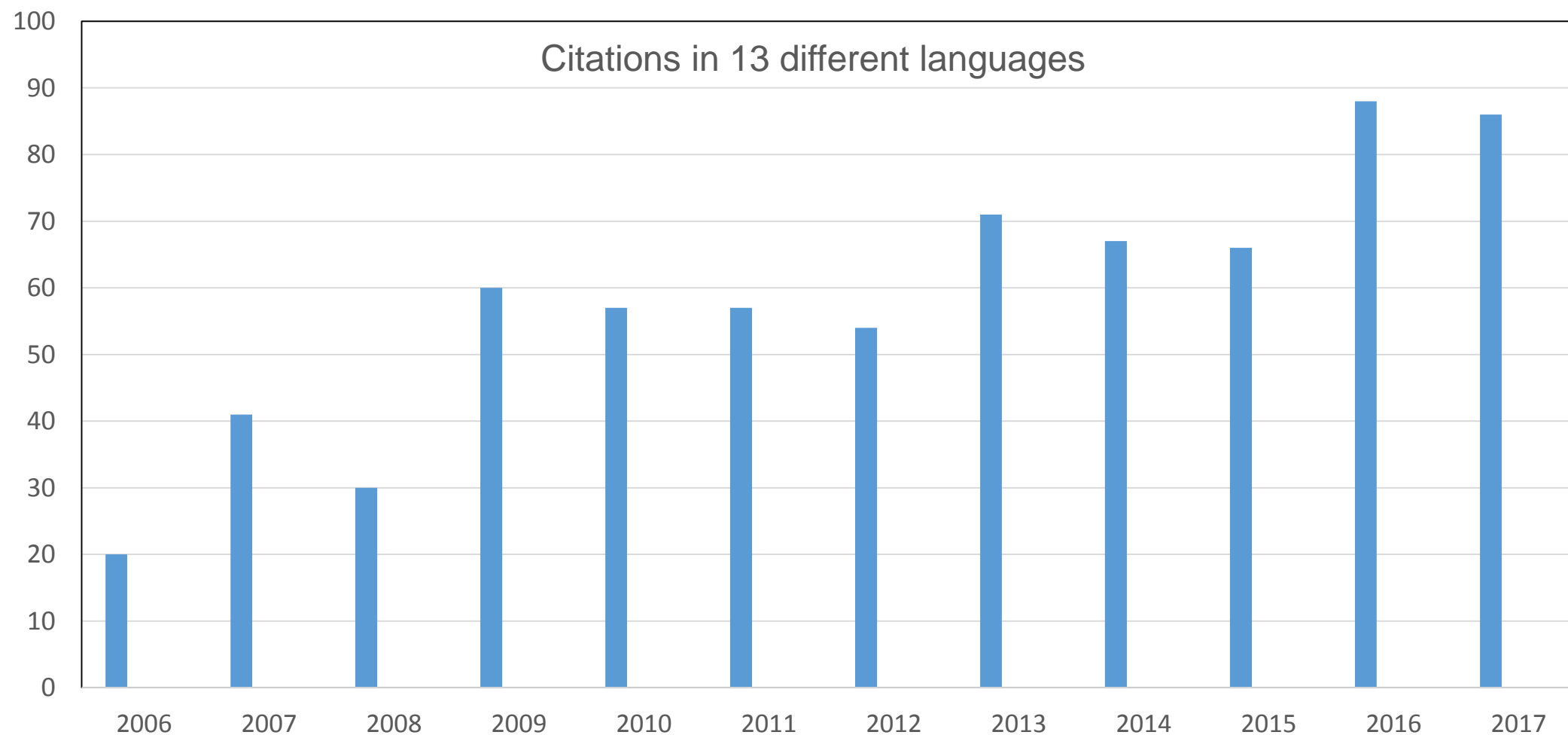
Website metrics www.jctlm.org



‘Traceability + laboratory medicine’: Google Scholar



JCTLM Citations in Google Scholar



Outline of talk

- WG-TEP structure and organisation
- Meetings
- Publicity & promotion
- What next?

The future of traceability

