

JCTLM Working Group on Traceability, Education & Promotion (WG-TEP)

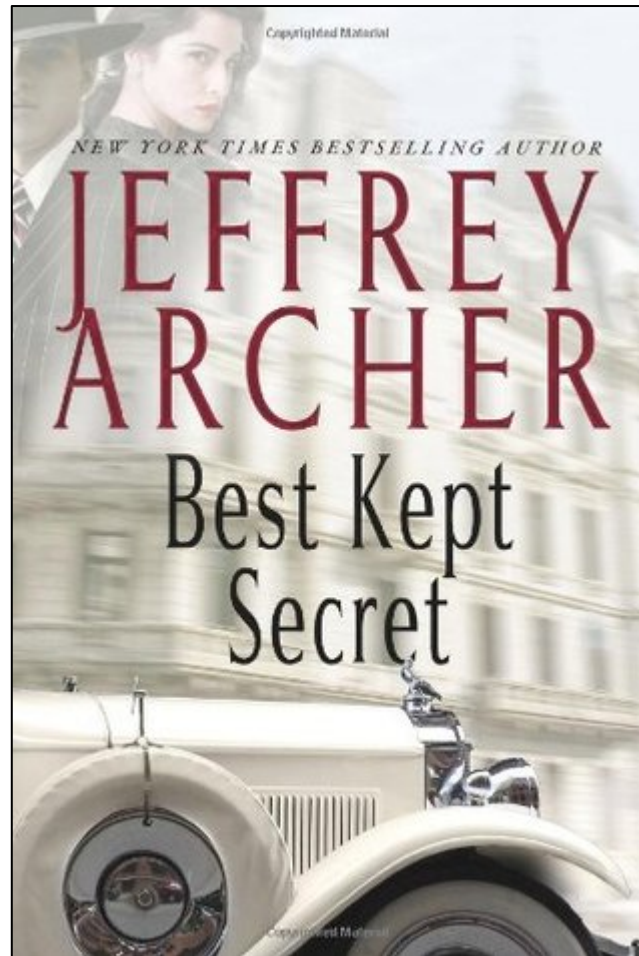
Graham Beastall

gbeastall@googlemail.com

Outline

1. Why do we need WG-TEP?
2. Where does WG-TEP fit into JCTLM?
3. What are the Terms of Reference for WG-TEP?
4. Who are the members of WG-TEP?
5. What will WG-TEP be doing?
6. How can you help WG-TEP?

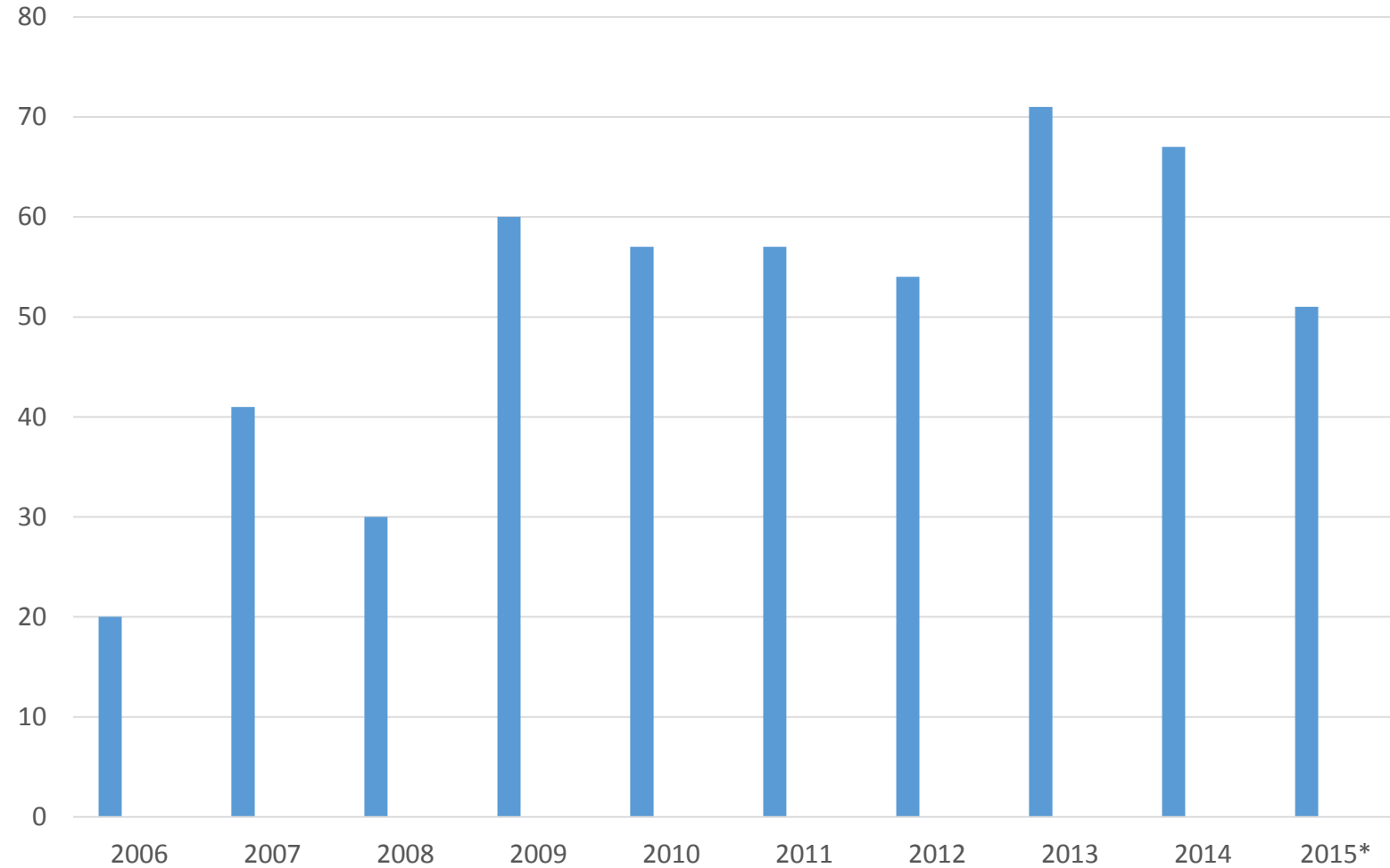
Traceability in Laboratory Medicine & JCTLM?



'Evidence' of 'Best Kept Secret'

- The 2013 JCTLM Members & Stakeholders meeting recognised 'the issue'
- Traceability is not part of specialist training in laboratory medicine
- Few 'ordinary' laboratory medicine specialists appreciate that traceability can affect the clinical utility of laboratory results
- Traceability statements in IVD products tend to be 'minimalist' in nature
- Small number of citations for JCTLM in Google Scholar (next slide)
- A detailed Q&A session on harmonization of tests results only mentioned JCTLM once (Clin Chem 2014 60: 923-7)
- The incoming IFCC Executive Board knew little about JCTLM

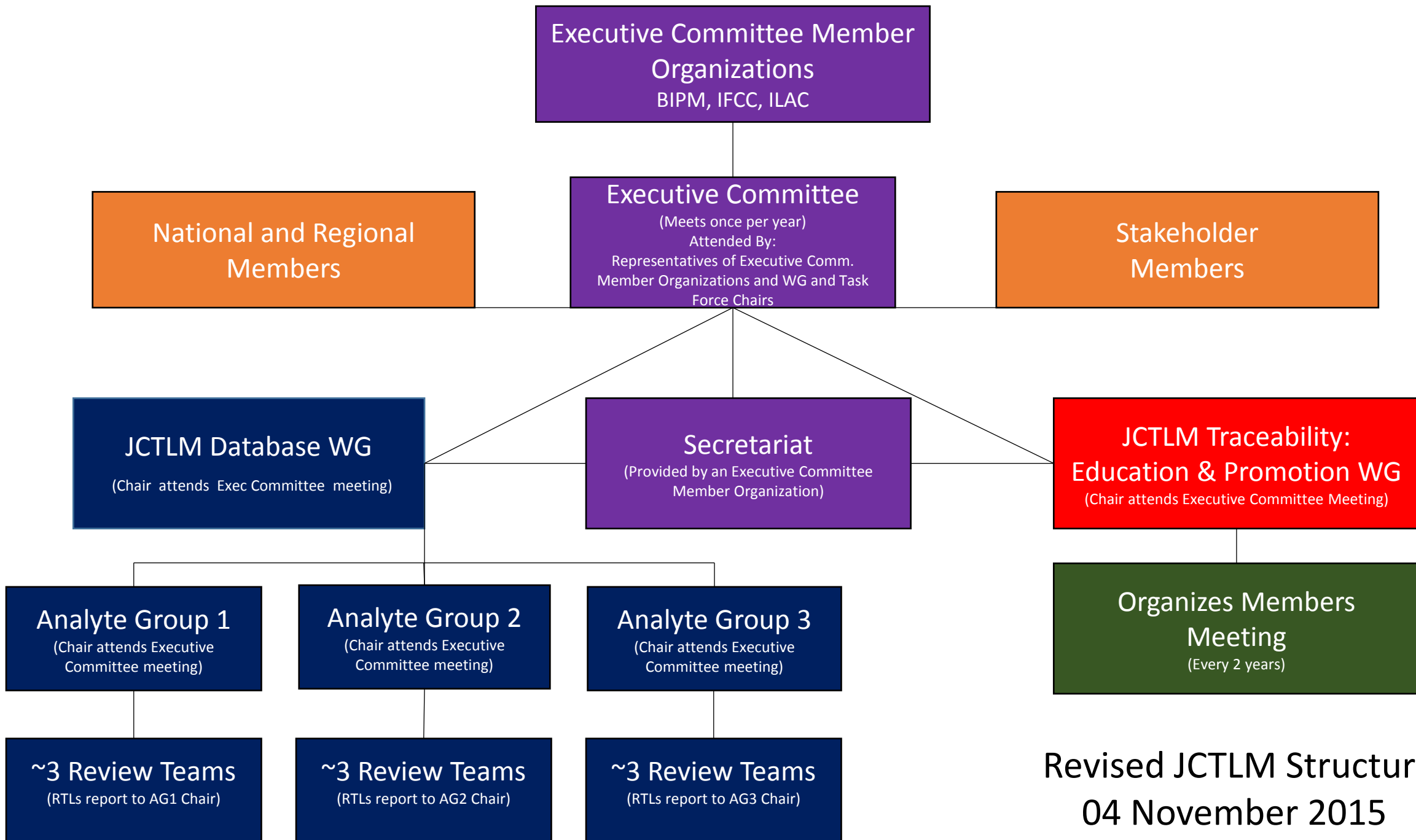
JCTLM Citations in Google Scholar



Data from Graham Jones

Outline

1. Why do we need WG-TEP?
2. Where does WG-TEP fit into JCTLM?
3. What are the Terms of Reference for WG-TEP?
4. Who are the members of WG-TEP?
5. What will WG-TEP be doing?
6. How can you help WG-TEP?



Revised JCTLM Structure
04 November 2015

Outline

1. Why do we need WG-TEP?
2. Where does WG-TEP fit into JCTLM?
3. What are the Terms of Reference for WG-TEP?
4. Who are the members of WG-TEP?
5. What will WG-TEP be doing?
6. How can you help WG-TEP?

Terms of Reference: Function

Aim:

- To produce and promote educational materials to demonstrate the value of traceability in laboratory medicine as a means to reduce between method variability in the interests of improved clinical outcomes and patient safety.

Specific Roles:

- Organisation of the two-yearly JCTLM Members Meeting
- Organisation of JCTLM scientific and educational meetings, symposia and conferences
- Assessment of applications for meetings to be held with JCTLM auspices
- Production of educational materials to promote the value of traceability in laboratory medicine
- In conjunction with the JCTLM Secretariat production of the annual JCTLM e-newsletter
- Production and maintenance of a 'traceability' website

Outline

1. Why do we need WG-TEP?
2. Where does WG-TEP fit into JCTLM?
3. What are the Terms of Reference for WG-TEP?
4. Who are the members of WG-TEP?
5. What will WG-TEP be doing?
6. How can you help WG-TEP?

Terms of Reference: Membership

Membership:

- Membership of WG-TEP will comprise:
 - Representatives of each of the organizations on the JCTLM Executive Committee
 - Four persons representing the wider JCTLM Membership
 - Persons co-opted on the basis of their skills and experience in educational and promotional materials
- The Chair of WG-TEP will be selected by the JCTLM Executive Committee and will attend meetings of the Executive Committee. He/she will serve a two year term of office, renewable at two year periods.
- The Secretary of WG-TEP will be chosen by the WG-TEP Members. He/she will serve a two year term of office, renewable at two year periods.

Initial WG Membership

Name	Organisation	Country
Graham Beastall	IFCC	UK
Robert Wielgosz	BIPM	FR
Graham Jones	ILAC	AU
Jeanita Pritchett	NIST	US
David Armbruster	Abbott	US
Tony Badrick	RCPAQAP	AU
Elvar Theodorsson	Eurachem	SE
Vincent Delatour	LNE	FR
David Ducroq	WEQAS	UK
Anja Kessler	RfB	DE
Nanette Brouwer	SKML	NL
Chen Baorong	Beijing Aerospace General Hospital Reference Laboratory	CN
Silvia Quiroga / Marta Torres	ProgBA	AR
Ex Officio		
Gary Myers	JCTLM Chair	US
Stephanie Maniguet	BIPM & WG-TEP Secretary*	FR

Outline

1. Why do we need WG-TEP?
2. Where does WG-TEP fit into JCTLM?
3. What are the Terms of Reference for WG-TEP?
4. Who are the members of WG-TEP?
5. What will WG-TEP be doing?
6. How can you help WG-TEP?

WG-TEP Action Plan

- Meets for the first time on Wednesday 2 December
- That meeting will agree a draft 2y programme of activities
- This draft action plan will be shared for comment with:
 - JCTLM Executive
 - JCTLM Members & Stakeholders
- The final action plan will be approved by the JCTLM Executive and widely publicised – target date 31 March 2016

WG-TEP Discussion Points

- WG members have suggested several actions, including:
 - Earlier & wider publicity for JCTLM meetings
 - Target list of conferences/meetings for traceability session
 - Generic traceability abstract poster to be customised for local use
 - Simple system for awarding JCTLM 'auspices' to meetings/symposia
 - High quality vector graphics to explain traceability
 - Webinars and Powerpoint presentations (freely available)
 - Review article(s) on importance of traceability to patient care
 - Series of traceability monographs
 - Learning materials for training in laboratory medicine
 - Website with its own identity
 - JCTLM 'recognition' scheme for achievements in traceability

Constraint on WG-TEP Actions



- Lack of designated funding will be a constraint on WG-TEP activity:
- Potential sources of income include:
 - JCTLM Members & Stakeholders
 - Registration fees for meetings
 - Company sponsorship
 - Educational awards
 - Charitable trusts
 - Fees for using JCTLM materials
 - Other – please suggest

Outline

1. Why do we need WG-TEP?
2. Where does WG-TEP fit into JCTLM?
3. What are the Terms of Reference for WG-TEP?
4. Who are the members of WG-TEP?
5. What will WG-TEP be doing?
6. How can you help WG-TEP?

How Can You Help JCTLM WG-TEP?



- Suggest educational/promotional material you would find useful
- Offer to produce educational/promotional material
- Promote JCTLM educational/promotional material
- Suggest topics/speakers for symposia and JCTLM Meetings
- Organise scientific/educational sessions on traceability
- Seek JCTLM 'auspices' for activities you organise
- Use and customise JCTLM abstract/poster in local context
- Share news of local achievement in traceability in laboratory medicine
- Check the WG-TEP website regularly (once launched!)
- Link your organization to the JCTLM website
- Suggest new members for JCTLM
- Suggest sources of funding for TEP activities
- Other actions – please suggest!