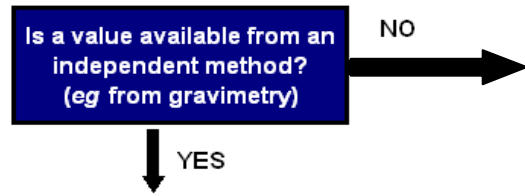


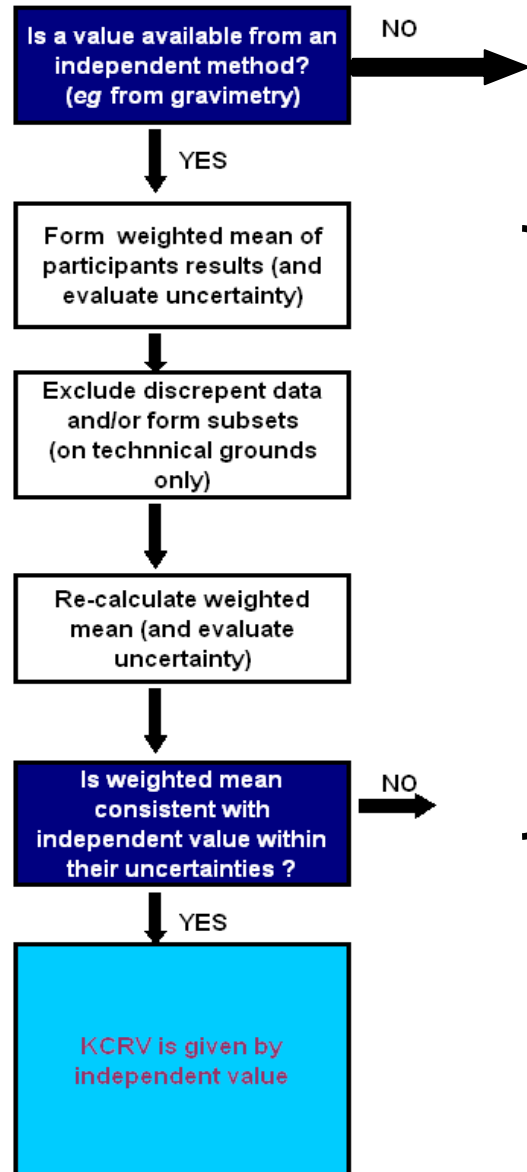
**Calculating the KCRV**  
summarising the experience  
of the CCQM GAWG

*Approved by*  
18<sup>th</sup> GAWG  
Sydney October 2007

# Step 1

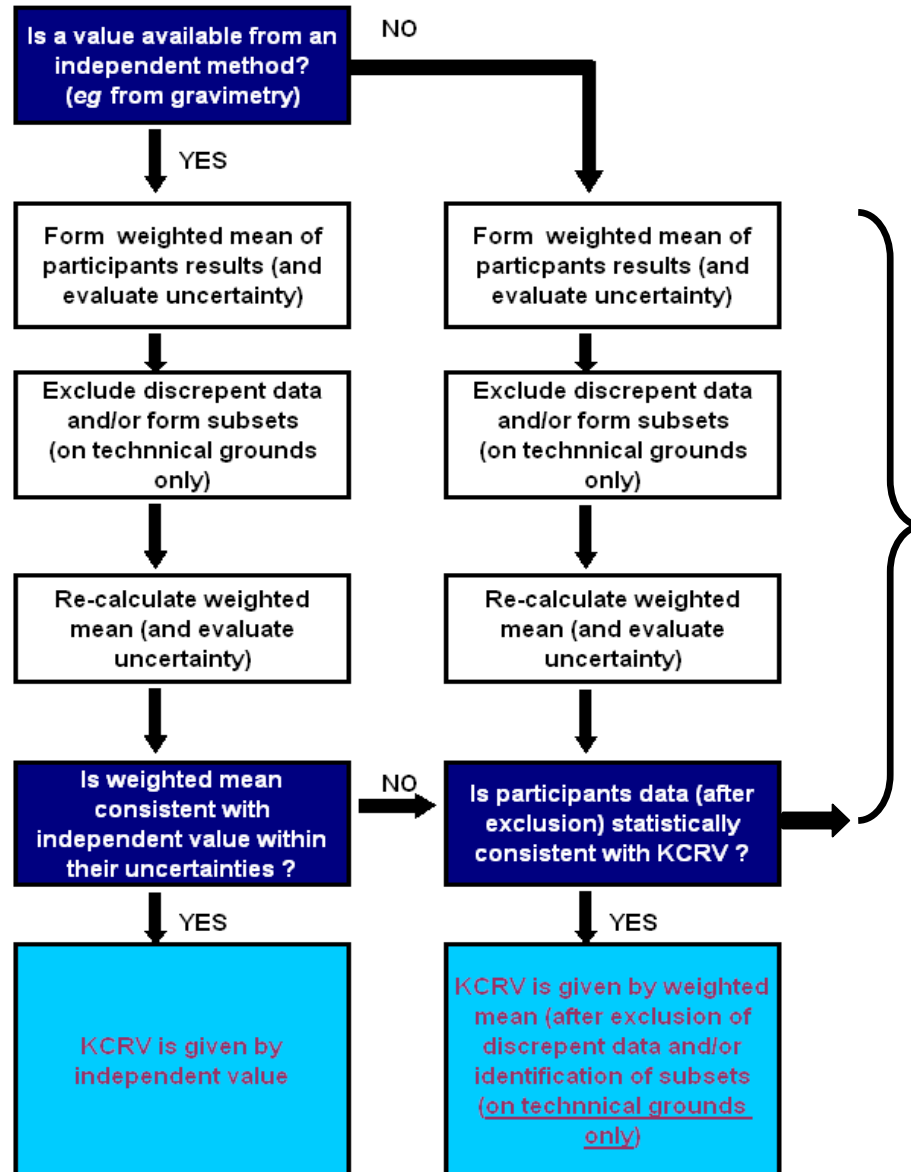


# Step 2



We have'nt always documented this.  
But it has always been a part of our discussions

# Step 3

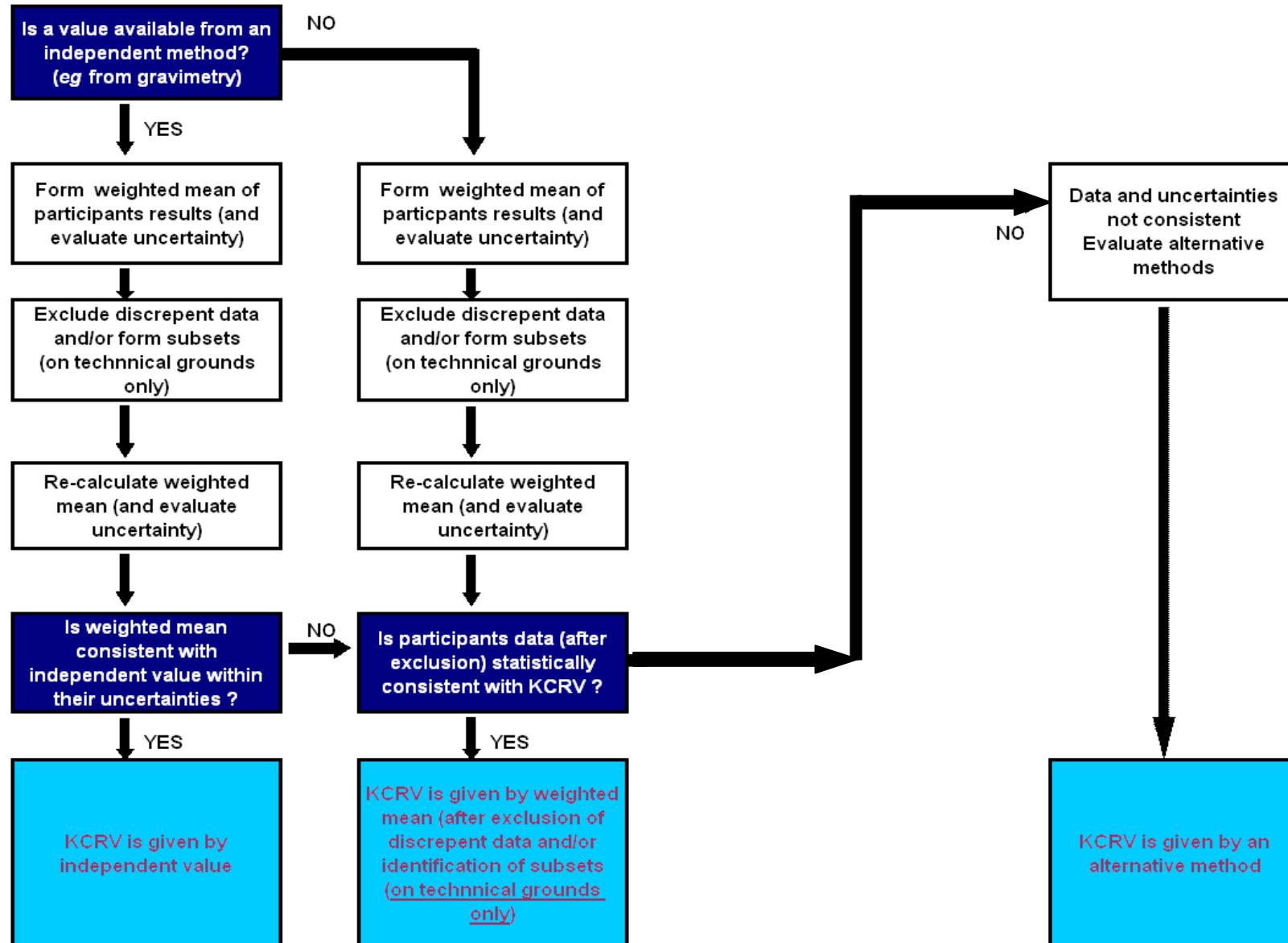


In the case of a preparative comparison, this is done by the fitting of the line  
*eg K53 and P70*

All of our comparisons are covered by this scheme  
*(except K41)*

# Step 4

*K41 only*



# Extended scheme

