

<b>Outline of JCTLM Procedures For Evaluating Certified Reference Materials And Reference Measurement Methods/Procedures to be listed as being of higher metrological order</b>			
Author : C. M. Jackson	Date : 2006-01-24 Version: 2.1	Authorized : JCTLM Executive	JCTLM WG1 P-01

# OUTLINE OF JCTLM PROCEDURES FOR EVALUATING CERTIFIED REFERENCE MATERIALS AND REFERENCE MEASUREMENT METHODS/PROCEDURES TO BE LISTED AS BEING OF HIGHER METROLOGICAL ORDER

## JCTLM WG1-P-01

<b>PRIMARY AUTHOR</b>	<b>AUTHORIZED</b>
NAME <b>CRAIG M. JACKSON</b>	NAME <b>JCTLM EXECUTIVE</b>
FUNCTION <b>MEMBER, JCTLM WG1 CHAIR, PROCEDURES TEAM</b>	FUNCTION
SIGNATURE	SIGNATURE

<b>Outline of JCTLM Procedures For Evaluating Certified Reference Materials And Reference Measurement Methods/Procedures to be listed as being of higher metrological order</b>			
Author : C. M. Jackson	Date : 2006-01-24 Version: 2.1	Authorized : JCTLM Executive	JCTLM WG1 P-01

**OUTLINE OF JCTLM PROCEDURES FOR EVALUATING CERTIFIED REFERENCE MATERIALS AND REFERENCE MEASUREMENT METHODS/PROCEDURES TO BE LISTED AS BEING OF HIGHER METROLOGICAL ORDER**

**1. Contents**

PARAGRAPH	TITLE	PAGE
<u>1.</u>	<u>CONTENTS</u> .....	2
<u>2.</u>	<u>PURPOSE</u> .....	2
<u>3.</u>	<u>SCOPE</u> .....	2
<u>4.</u>	<u>ACRONYMS</u> .....	2
<u>5.</u>	<u>DEFINITIONS</u> .....	3
<u>6.</u>	<u>PROCEDURES</u> .....	3
<u>7.</u>	<u>RELATED DOCUMENTS</u> .....	3
<u>8.</u>	<u>ATTACHMENTS</u> .....	4
<u>9.</u>	<u>REVISION HISTORY</u> .....	4
<u>10.</u>	<u>FLOWCHART</u> .....	5

**2. Purpose**

This outline provides an overview of the process by which JCTLM WG1 and its review teams make recommendations for listing of materials and reference measurement methods/procedures as being of higher metrological order.

**3. Scope**

The processes described apply to all CRMs and RMM/Ps nominated for inclusion by the JCTLM in its lists of available higher-order materials and procedures as described in the Preamble to this Quality System Manual.

**4. Acronyms**

Acronyms used in these procedures are defined in the document JCTLM WG1-P-00, Quality Policy and Definitions.

<b>Outline of JCTLM Procedures For Evaluating Certified Reference Materials And Reference Measurement Methods/Procedures to be listed as being of higher metrological order</b>			
Author : C. M. Jackson	Date : 2006-01-24 Version: 2.1	Authorized : JCTLM Executive	JCTLM WG1 P-01

## 5. Definitions

Definitions of the terms used in these procedures are given in the document JCTLM WG1-P-00, Quality Policy and Definitions.

## 6. Procedures

The procedure for the evaluation of materials and procedures to be listed by the JCTLM as being of higher metrological order is segmented into five processes. The details of each process are presented in the individual procedures of this quality system. The attached flowchart indicates how the detailed processes are interconnected.

The procedures by which the JCTLM WG1 communicates and is managed is indicated in the accompanying flowchart.

## 7. Related documents

JCTLM Preamble Website: <http://www.bipm.org/utis/en/pdf/Preamble.pdf>

JCTLM WG1-P-00 Quality Policy and Definitions

### REVIEW PROCEDURES

JCTLM WG1-P-01 Outline of JCTLM Procedures for Evaluating Certified Reference Materials and Reference Measurement Methods/Procedures to be Listed as Being of Higher Metrological Order (This document)

JCTLM WG1-P-02 Process for Requesting and Accepting Nominations for Certified Reference Materials (CRMs) and Reference Measurement Methods/Procedures (RMM/Ps)

JCTLM WG1-P-03 Process for Review and Approval of Nominated Certified Reference Materials (CRMs) and Reference Measurement Methods/Procedures (RMM/Ps)

JCTLM WG1-P-04A Process for Comparing Certified Values of the Same Measurand in Multiple Certified Reference Materials (CRMs)

JCTLM WG1-P-04B Process for the Demonstration of the Extent of Equivalence of Multiple Reference Measurement Methods/Procedures (RMM/Ps) for the Same Nominal Measurand

JCTLM WG1-P-05 Process for Consensus Review of Recommendations from WG1 Review Teams and Communicating the Recommendations to the JCTLM Secretariat

### MANAGEMENT PROCEDURES

JCTLM WG1-P-06 Application, Nomination and Approval for Membership on WG1 Review Teams

<b>Outline of JCTLM Procedures For Evaluating Certified Reference Materials And Reference Measurement Methods/Procedures to be listed as being of higher metrological order</b>			
Author : C. M. Jackson	Date : 2006-01-24 Version: 2.1	Authorized : JCTLM Executive	JCTLM WG1 P-01

- JCTLM WG1-P-07      Process for Making Changes in WG1 Quality System Procedures
- JCTLM WG1-P-08      Process for Creating, Restructuring, and Retiring WG1 Review Teams
- JCTLM WG1-P-09      Process for Appealing Decisions of the JCTLM Executive

## 8. Attachments

- Attachment 1      Flow chart, Outline of JCTLM Procedures for Evaluating Certified Reference Materials and Reference Measurement Methods/Procedures to be listed as Being of Higher Metrological Order Chart WG1 0002.2

## 9. Revision History

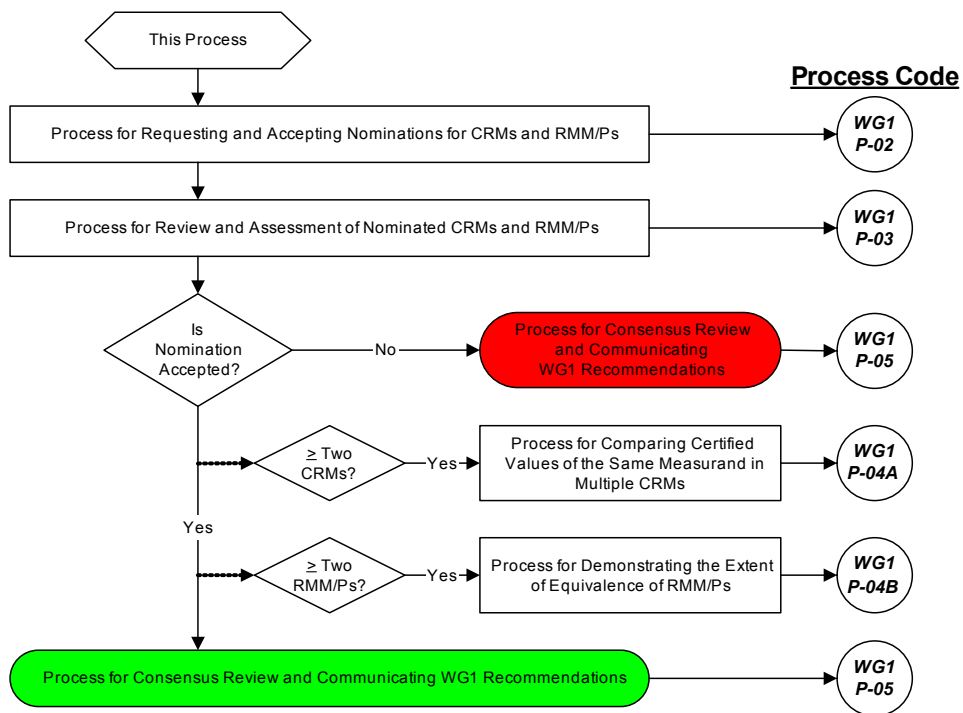
Version number	Date of Issue/Review	Summary of change
Version 1.0	01/08/2004	Initial issue of WG1 Quality System Procedures
Version 2.0	10/15/2005	Separation of procedures into reviewing and management groups, revision of titles for some procedures to more accurately reflect the procedure content
Version 2.1	12/01/2006	Correction of Minor Textual errors

**Outline of JCTLM Procedures For Evaluating Certified Reference Materials And Reference Measurement Methods/Procedures to be listed as being of higher metrological order**

Author : C. M. Jackson	Date : 2006-01-24 Version: 2.1	Authorized : JCTLM Executive	JCTLM WG1 P-01
------------------------	-----------------------------------	---------------------------------	-------------------

**10. Flowchart**

**OUTLINE OF JCTLM PROCESSES FOR IDENTIFYING AND LISTING CERTIFIED REFERENCE MATERIALS (CRMs) AND REFERENCE MEASUREMENT METHODS/PROCEDURES (RMM/Ps) AS BEING OF HIGHER METROLOGICAL ORDER WG1-P-01**



**WG1-Management Procedures**

